



NEW WAY TO MANAGE YOUR PRODUCTION: MES & CHINA 2025 / INDUSTRY 4.0

Werum IT Solutions – the Leading MES Supplier
for the Pharma & Biotech Industry



© Werum IT Solutions. Confidential information. All rights reserved.



Agenda

- 1 New Industry Focus Area: China 2025 / Industry 4.0
- 2 MES: Focus on enabling Pharma 4.0
- 3 Werum IT Solutions: Company Profile

Today's Goal

- **China 2025 / Industry 4.0**
 - Understand why MES is Key
- **Integration and Data Flow**
 - Why it enables Right First Time

Pharma 4.0

Cyber Fred Workforce 4.0: New Operator Challenges



Problem Statement: The Challenge of Implementing Integrated Automation Environments

- Problem Statement out of Manufacturing Engineering & Automation:
 1. “Our Manufacturing suites / machines are **only partially networked** and **don’t support horizontal & vertical integration...**”
 2. “Good and established **PAT Sensors are available and proven**. The feasibility of the technology is established and it **needs the commercial manufacturing routine**. The Operational GMP Manufacturing **Control Strategies** for Manufacturing Execution **are not yet well implemented into the Manufacturing Execution Landscape** (e.g. Equipment, IT Systems, Manufacturing Best Practices) Integration and Qualification of PAT methods / sensors in Manufacturing machines / networks and the related Data Management & Representation, Change Management, Knowledge Management & Data Integrity aspects are **not implemented yet.**“

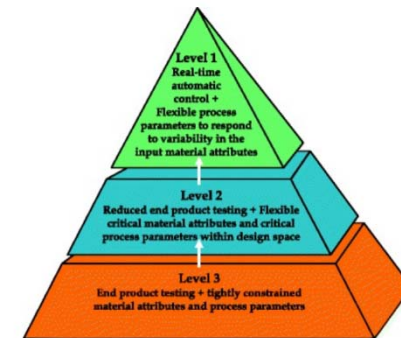
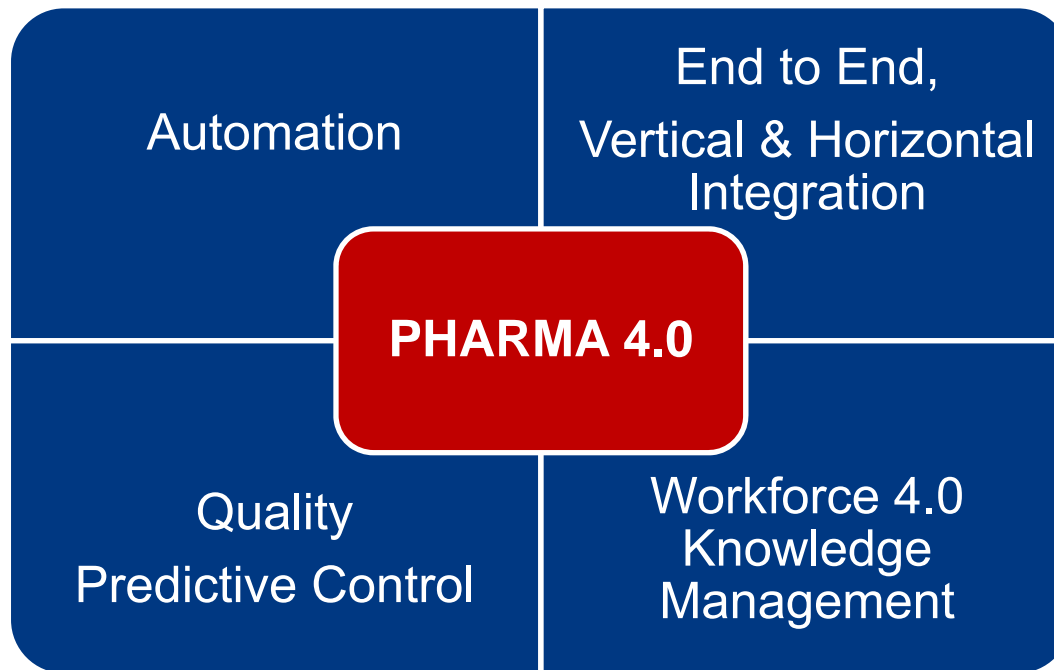
Problem Statement: The Difficulty in Establishing a Robust & Flexible Control Strategy in Manufacturing

- The transfer from the development based **Control Strategy** to the Commercial Production by Tech Transfer and Scale up is **missing Best Practice Methodology** to create a flexible and robust Production Process with a well documented Lifecycle Management.
- **Product independent** Platform Knowledge is not well transferred into the Product Design Space.
- The impact of unknown process parameters and criticality, raw material attributes and **impurities are normally** not well addressed in the Product Control Strategy Lifecycle Management.
- “The transformation in the design and the execution of the Control Strategy has to follow a ‘**Data Integrity by Design**’ approach.



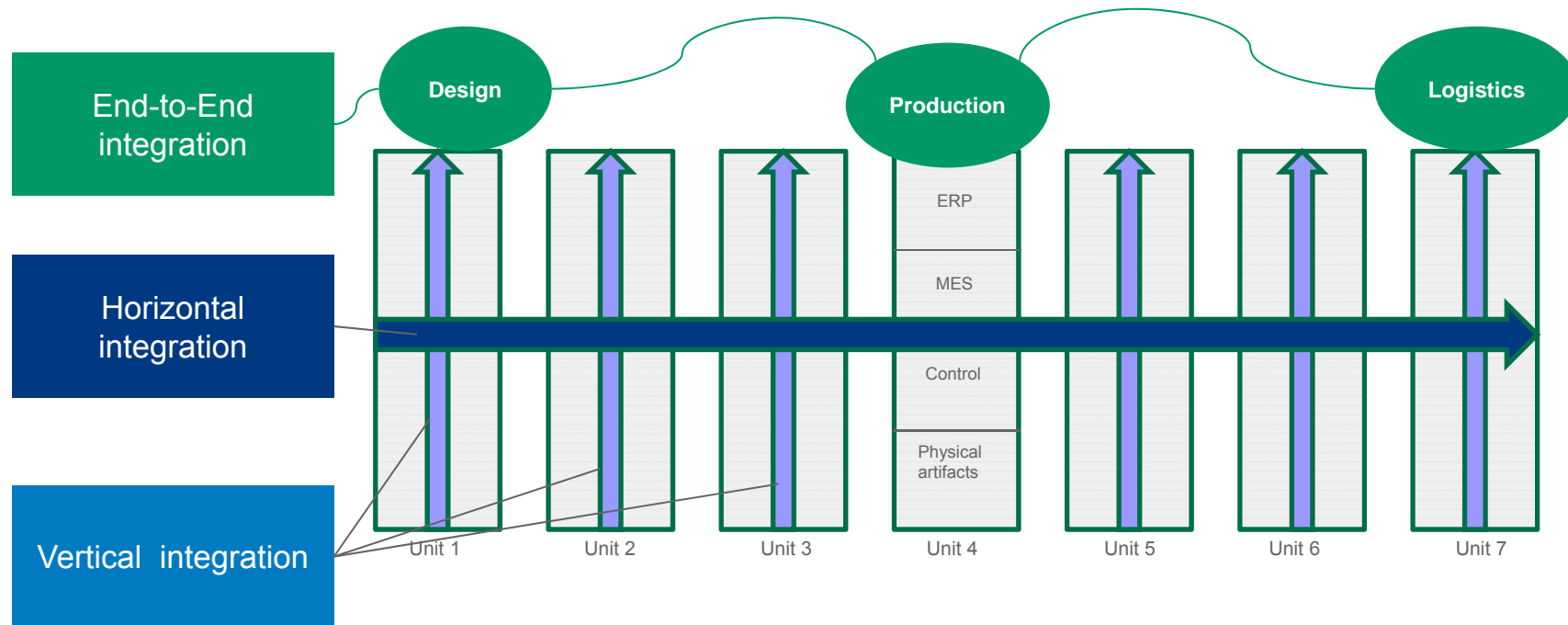
Source: **Ian Thrusell**,
“DI Expectations and Guidance”,
WHO Prequalification Team (ISPE EU Conference, March 2016)

Key Areas of PHARMA 4.0

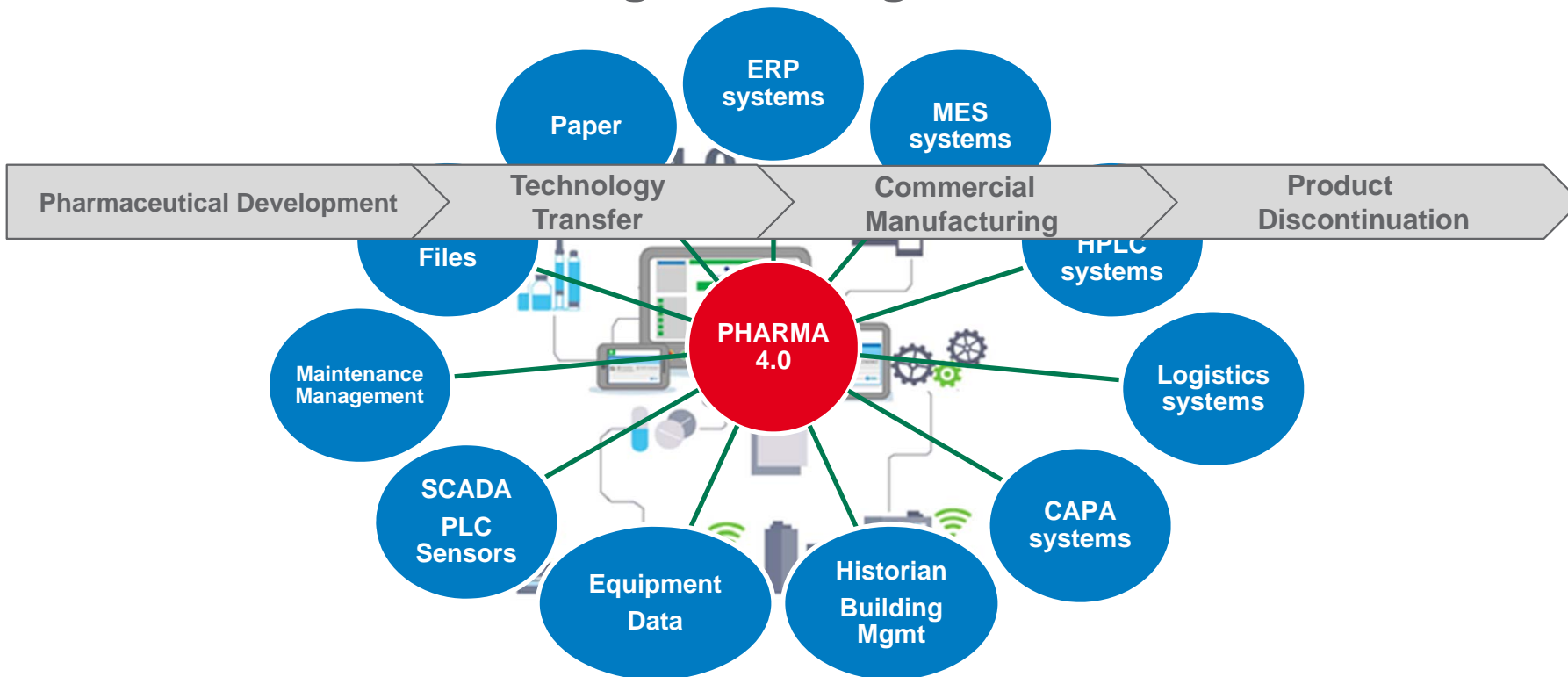


Control strategy implementation options

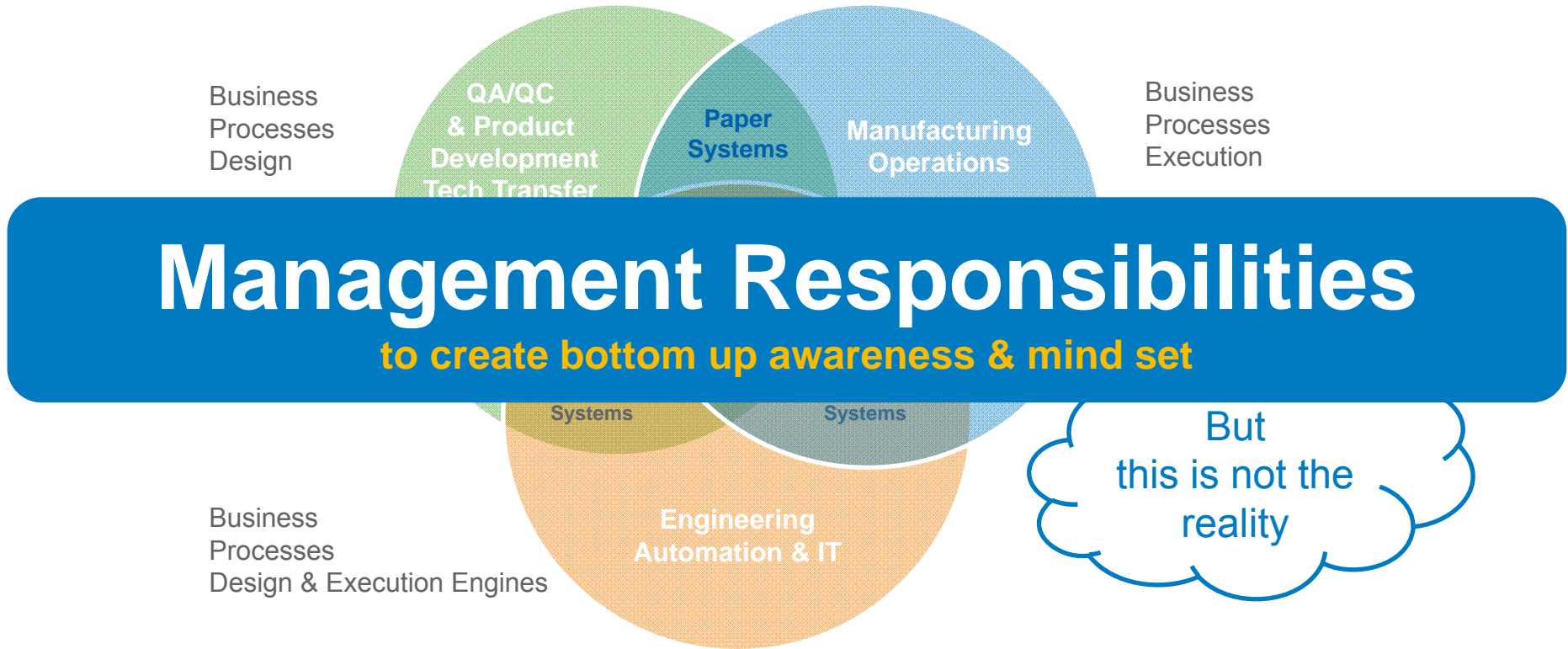
End to End Integration: Challenge & Opportunity



Vertical & Horizontal Integration: Big Data



Interdisciplinary Collaboration to Create the Manufacturing Control Strategy



Agenda

- 1 New Industry Focus Area: China 2025 / Industry 4.0
- 2** MES: Focus on enabling Pharma 4.0
- 3 Werum IT Solutions: Company Profile

Industry 4.0 – Digitization of the manufacturing sector

Connectivity & Use of Data

“Industry 4.0 is based on the availability of all relevant information in real-time via **networking all instances** contributing to added value and the ability to determine the optimum added **value stream from the data at any time**. The linking of people, objects and systems generate dynamic, real-time optimized and self-organizing, cross-company value-added networks which can be essentially enhanced according to criteria like costs, availability and consumption of resources.“



Prof. Dr. Dr. h.c. Detlef Zühlke, PAS-X User Group Meeting 2014: From Smart Technologies to Smart Factories

© Werum IT Solutions. Confidential information. All rights reserved.

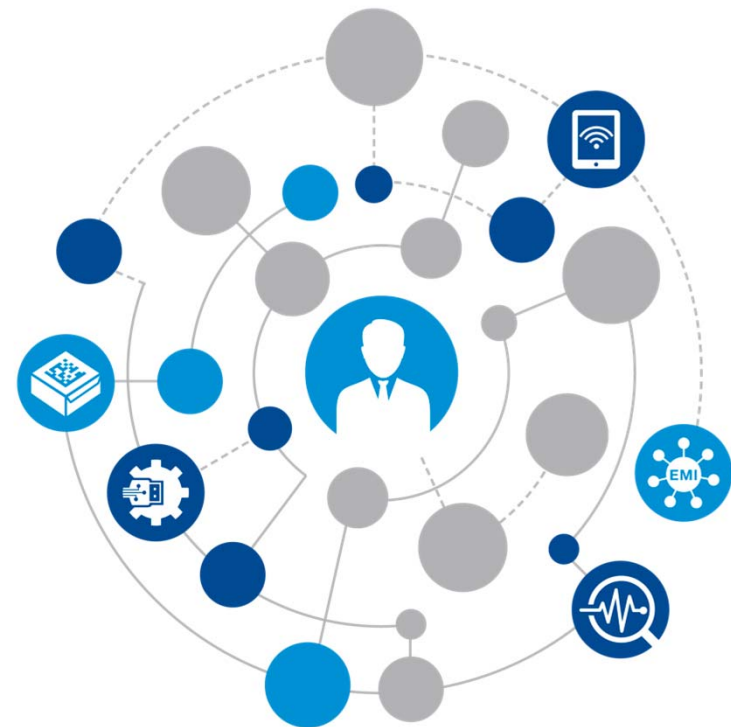
Sep 2017

Werum IT Solutions: New Way to Manage your Production: MES & China 2025 / Industry 4.0

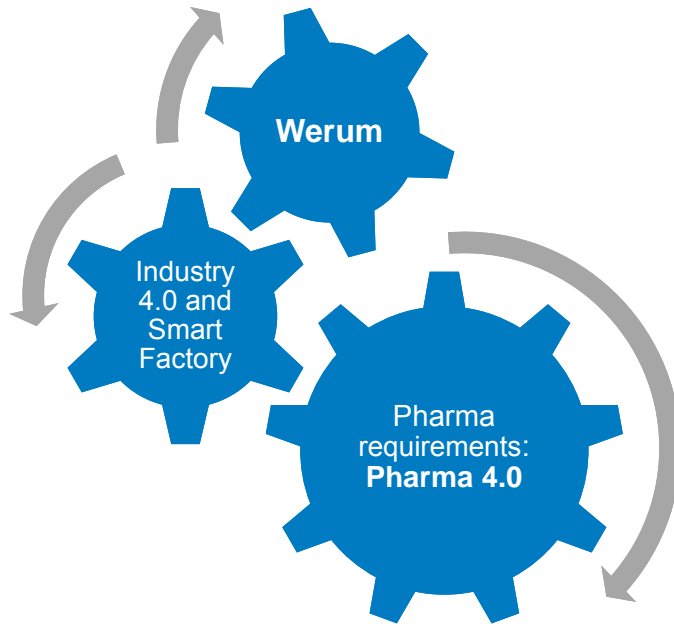
12

DIGITIZATION: PHARMA. SIMPLY CONNECTED.

- Thinking ahead the intelligent pharma production
- Efficiency meets flexibility
- Performance meets individualization

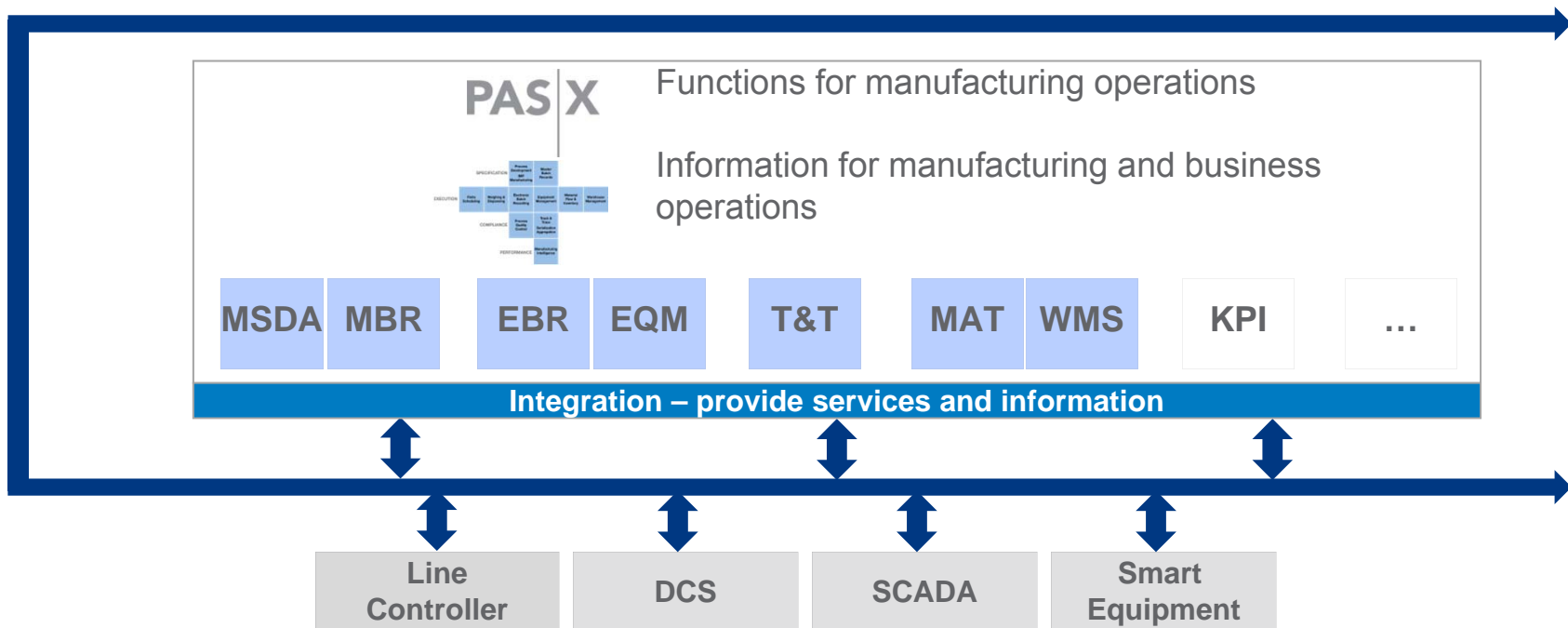


Werum: from Industry 4.0 to Pharma 4.0









- Customers
- Partners
- Committees
- Innovators

MSI: Message Based Shop Floor Integration



DIGITIZATION: PHARMA. SIMPLY CONNECTED.

- 
-  **Smart Packaging:** Enabling a new level of personalized medicine and product safety
 -  **Smart Devices:** The right information at the right time and place
 -  **Condition Monitoring & Predictive Analytics:** Reducing downtimes and optimizing the deployment of personnel and resources
 -  **Plug & Produce:** Laying the basis for IIoT functionalities by integration using standardized interfaces to reduce complexity of integration
 -  **Enterprise Manufacturing Intelligence (EMI):** For improved product quality (process stability) and productivity (process efficiency)



SMART PACKAGING – CONSUMER INFORMATION

The package as an information carrier opens up new information and service options for patients and users of pharmaceutical products.

Use cases:

- Digital patient information leaflets
- Audio patient information leaflets
- Digital tamper-proof protection
- Better product protection Health management
- Intake reminder
- Automatic repeat order





SMART PACKAGING – IN THE PRODUCTION PROCESS

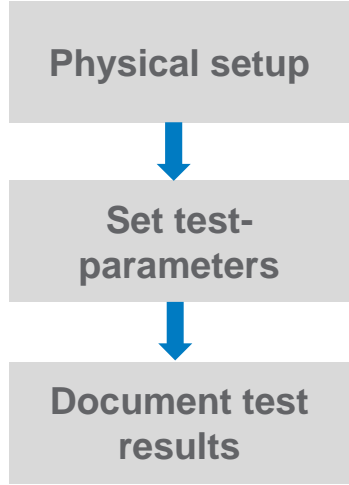
The package can communicate with packaging machines to increase OEE.

Use cases:

- Machinery settings are controlled/initiated via information on the packaging
- Personalized production, packaging, labelling
- Learning packaging: information is transferred to package

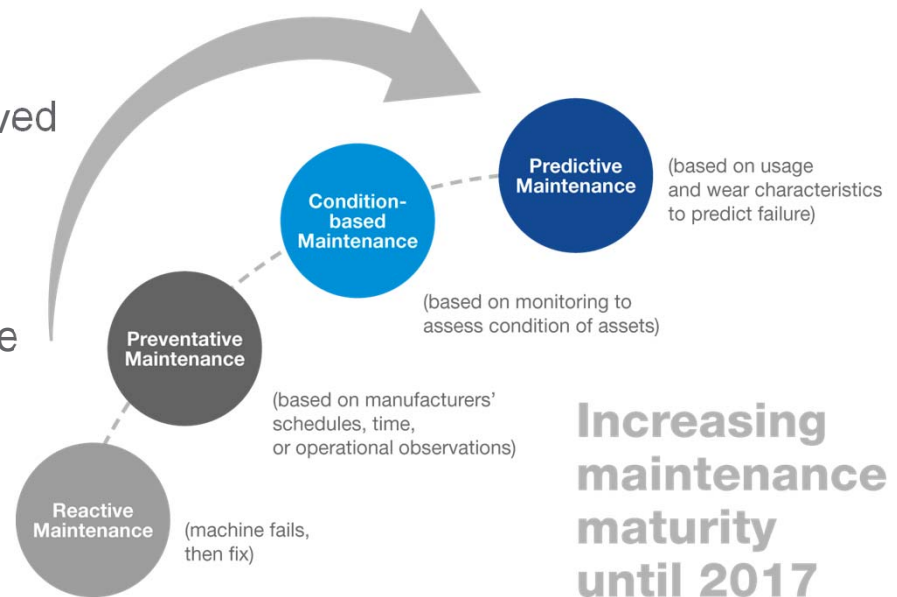


 **SMART DEVICES –**
Integrate a Filter Integrity Tester



CONDITION MONITORING & PREDICTIVE ANALYTICS

- Machine safety and efficiency can be improved by predicting and preventing critical future events
- Based on real time data, the status of a system is supervised and future events are predicted with a model
- Reactive or preventive maintenance is replaced by using data mining, modeling, statistics, machine learning



 **PLUG & PRODUCE –
NEW VERTICAL INTEGRATION CONCEPT**

Standardizing interfaces between MES, automation and control systems:

- Standardization reduces complexity of integration and enables “Plug & Produce”
- Reduced engineering and qualification efforts in setup phase and production

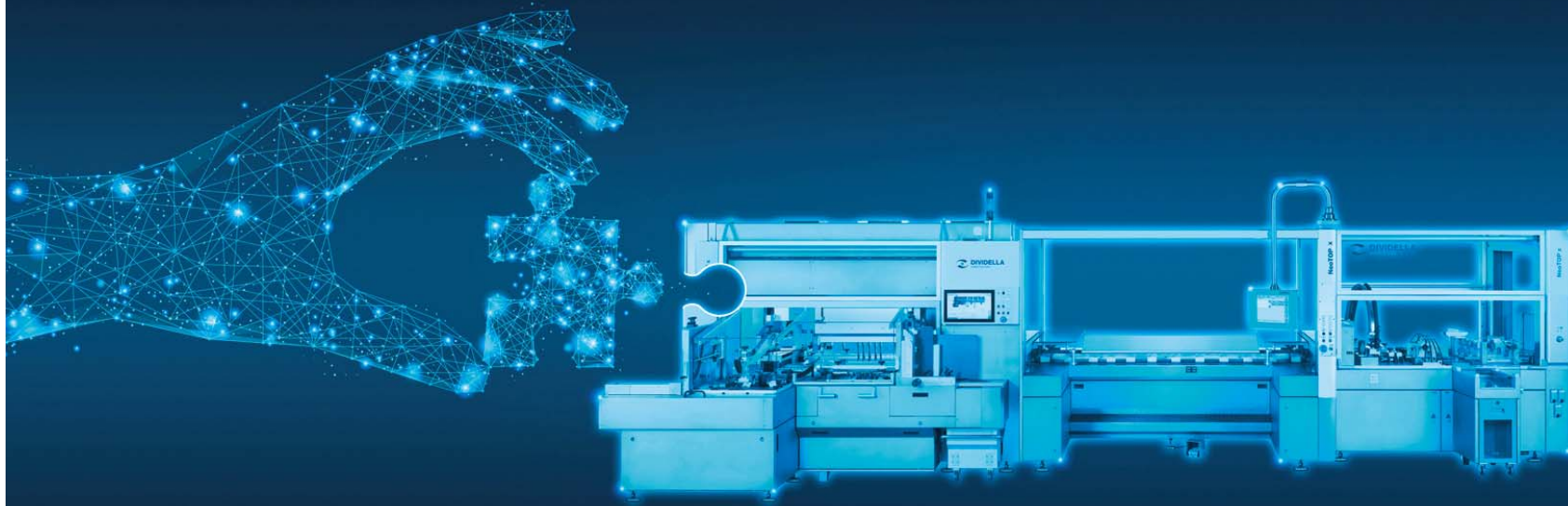


EMI – ENTERPRISE MANUFACTURING INTELLIGENCE

- Central collection and evaluation of data across different sources to improve product quality (process stability) and productivity (process efficiency)
- Data assessment results in real time analysis, standard reports and investigative analysis



PLUG & PRODUCE WITH PAS-X: UNIVERSAL CONNECTIVITY. MAXIMUM PRODUCTIVITY.

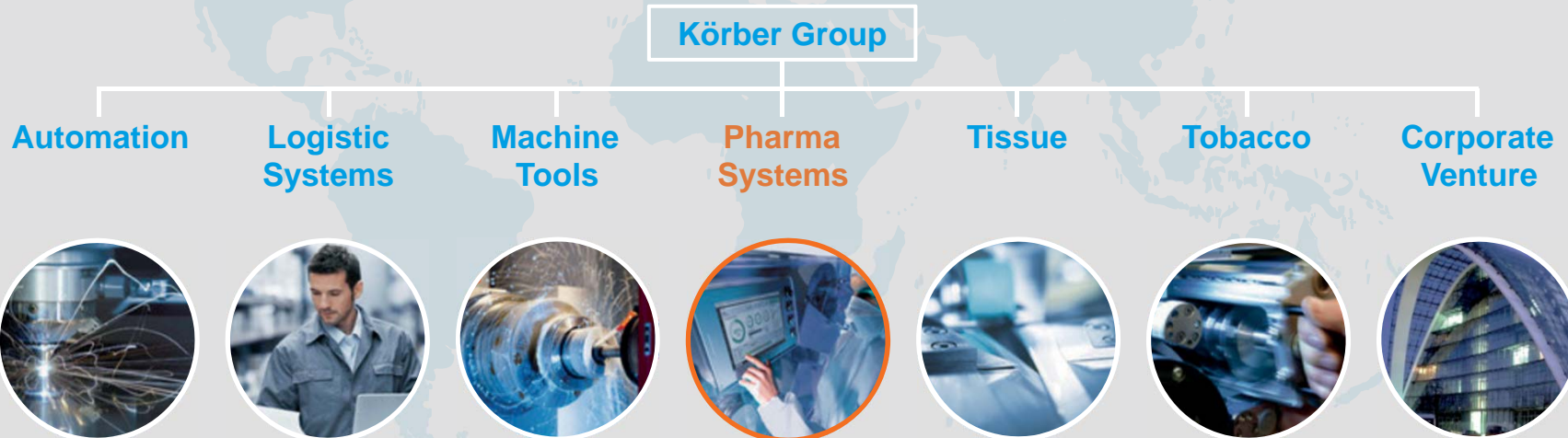


Agenda

- 1 New Industry Focus Area: China 2025 / Industry 4.0
- 2 MES: Focus on enabling Pharma 4.0
- 3** Werum IT Solutions: Company Profile

KÖRBER GROUP. TECHNOLOGY ACROSS INDUSTRIES.

- ▶ Sales € 2.2 billion
- ▶ Employees 11,500
- ▶ R&D ratio 5.7%



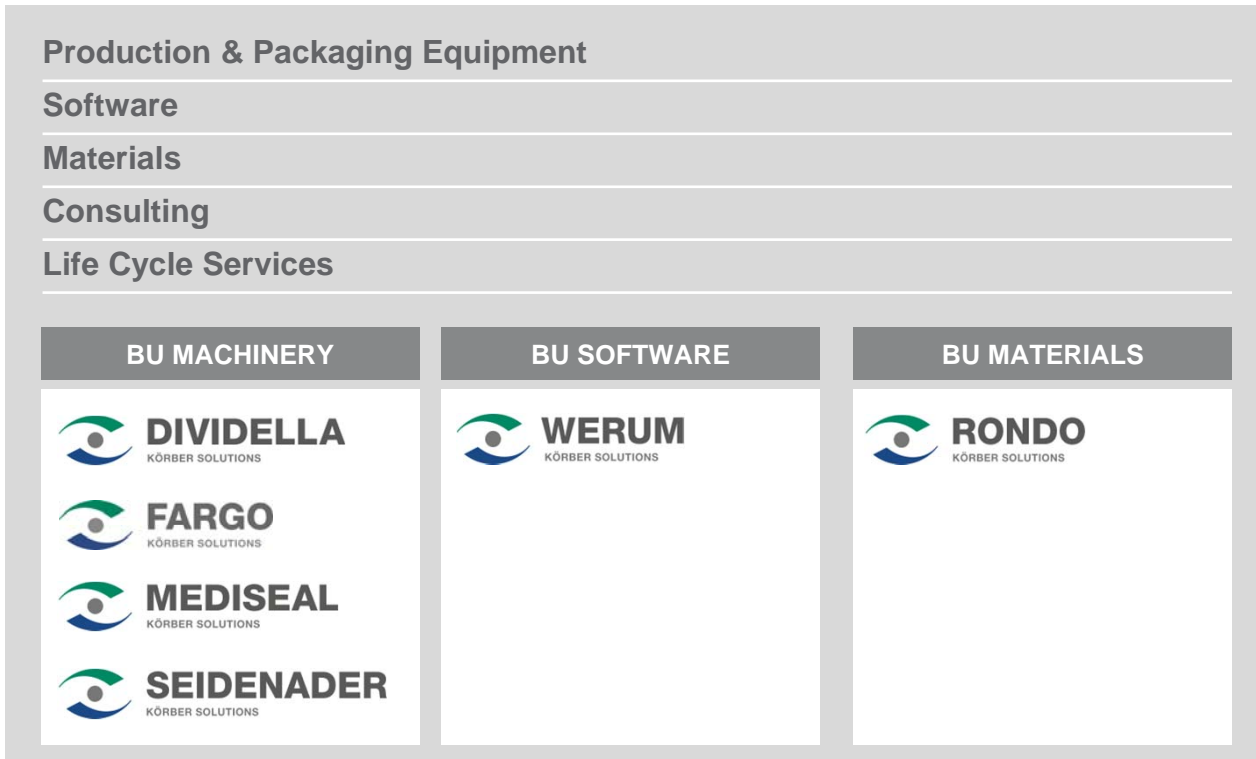
© Werum IT Solutions. Confidential information. All rights reserved.

Sep 2017

Werum IT Solutions: New Way to Manage your Production: MES & China 2025 / Industry 4.0

25

Werum IT Solutions: A Member of Körber Medipak Systems



The leading MES supplier for Pharma & Biotech



500+

Employees



14

Locations worldwide
Headquarters:
Lüneburg, Germany



25+

Years of experience
in the field of MES
for pharma & biotech



800+

PAS-X MES
installations
worldwide

The Pharma & Biotech industry relies on PAS-X MES

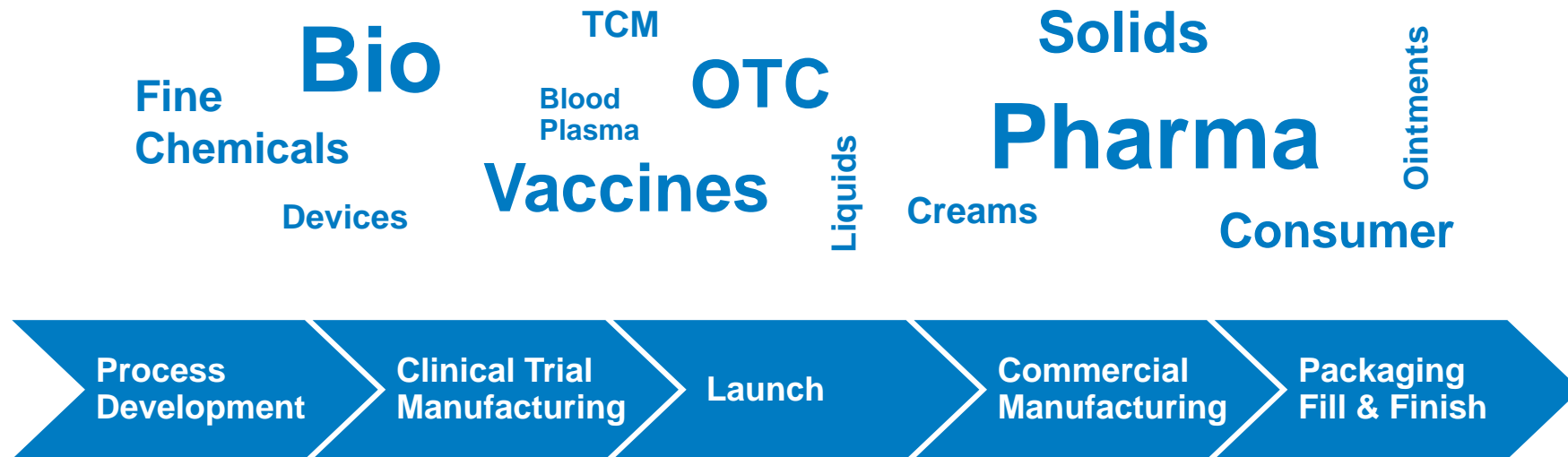


© Werum IT Solutions. Confidential information. All rights reserved.

We are always available for our customers



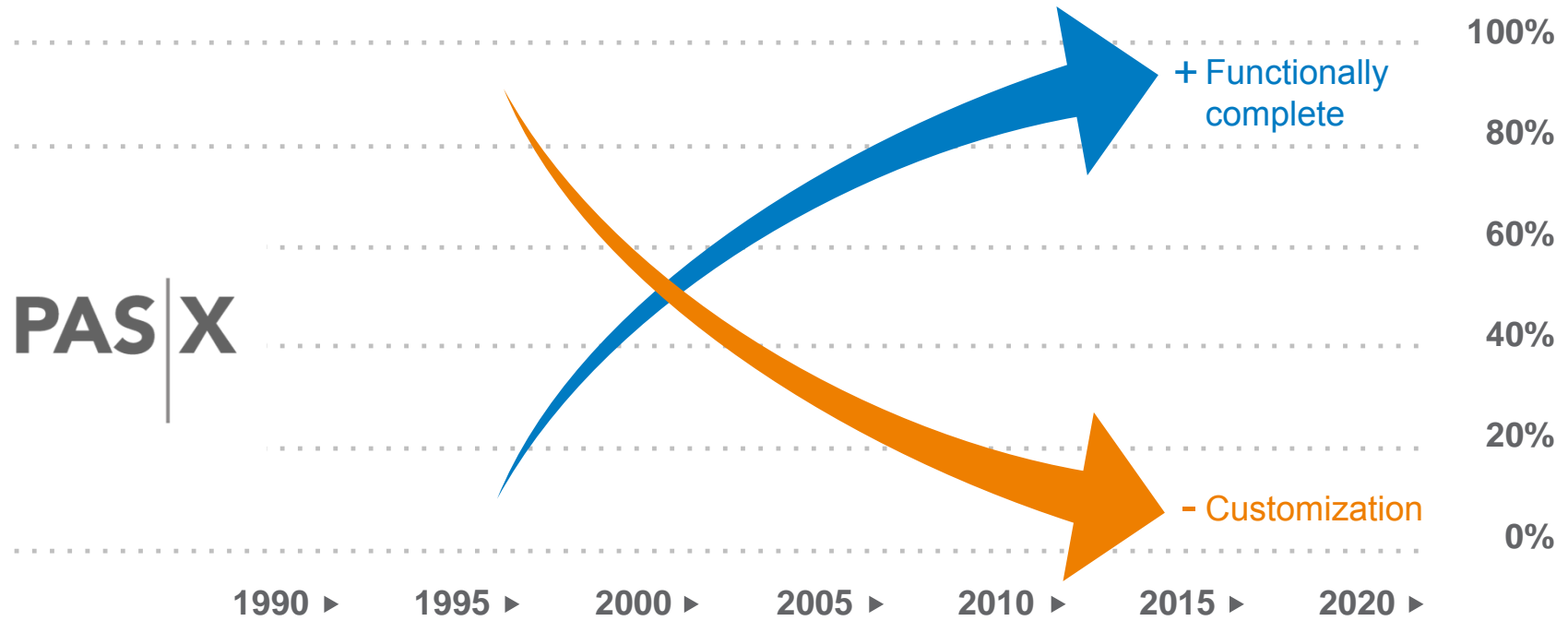
Your processes requirements are our core business



Complete MES Out-Of-The-Box

SOFTWARE

Adaptable to the needs of your site

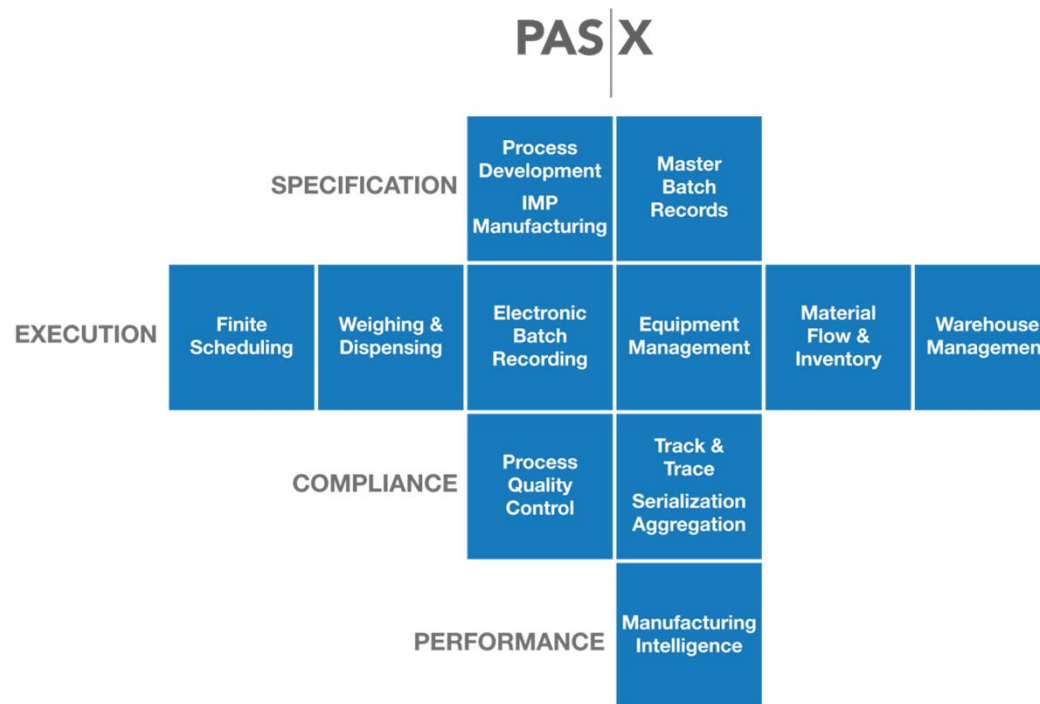


© Werum IT Solutions. Confidential information. All rights reserved.

Modular MES Product

SOFTWARE

#1 industry leading MES



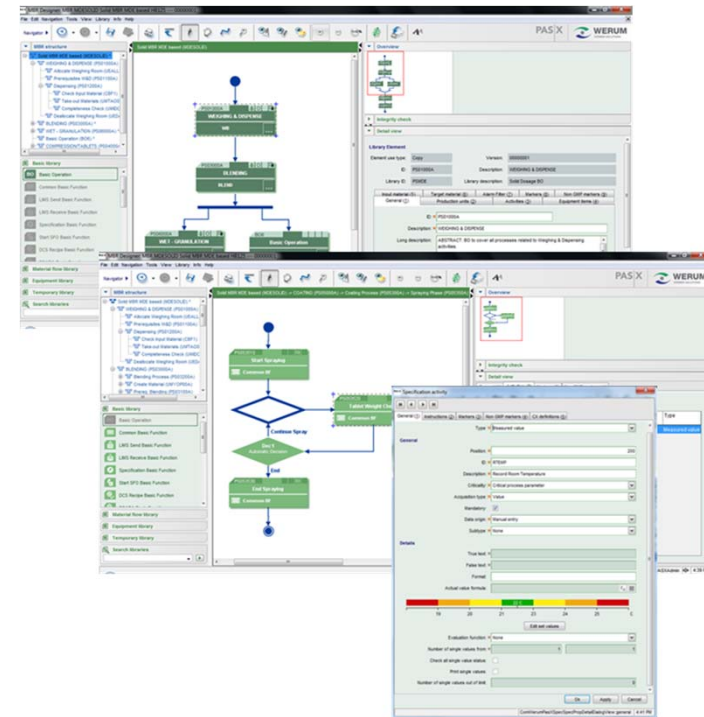
5 key benefit areas



Best in class: Master Batch Records

SOFTWARE

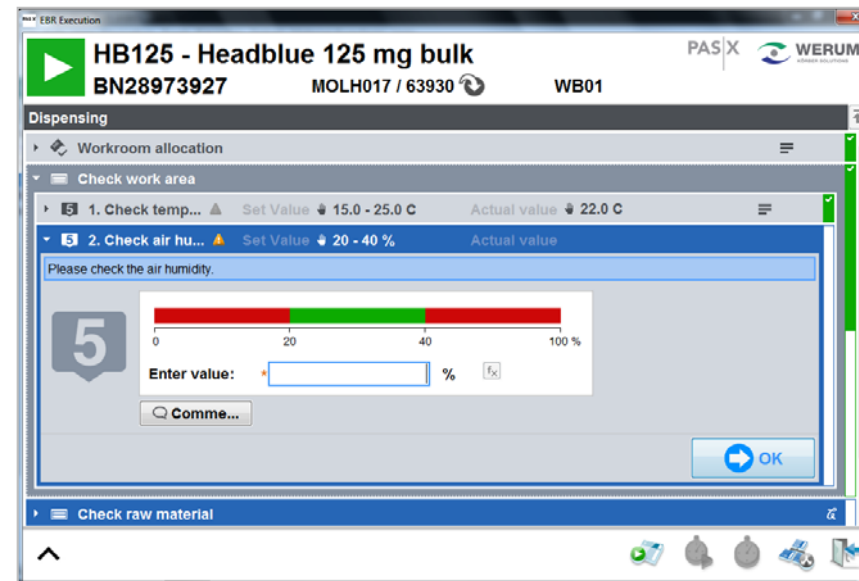
- Graphical drag & drop workflows
- Process library concept & standard recipes built in
- Low maintenance and management efforts
- Drastically reduced number of recipes



Best in class: Shop Floor Execution

SOFTWARE

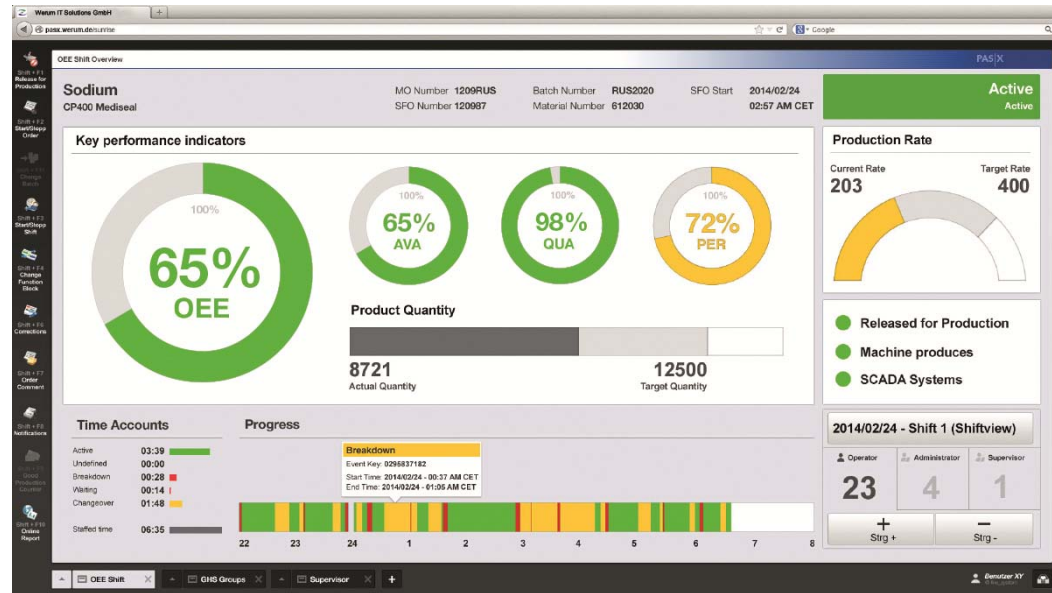
- Intuitive shop floor dialogs
- Strong user guidance for Right-First-Time
- Integrated deviation management
- Process and completeness checks



Best in class: Usability

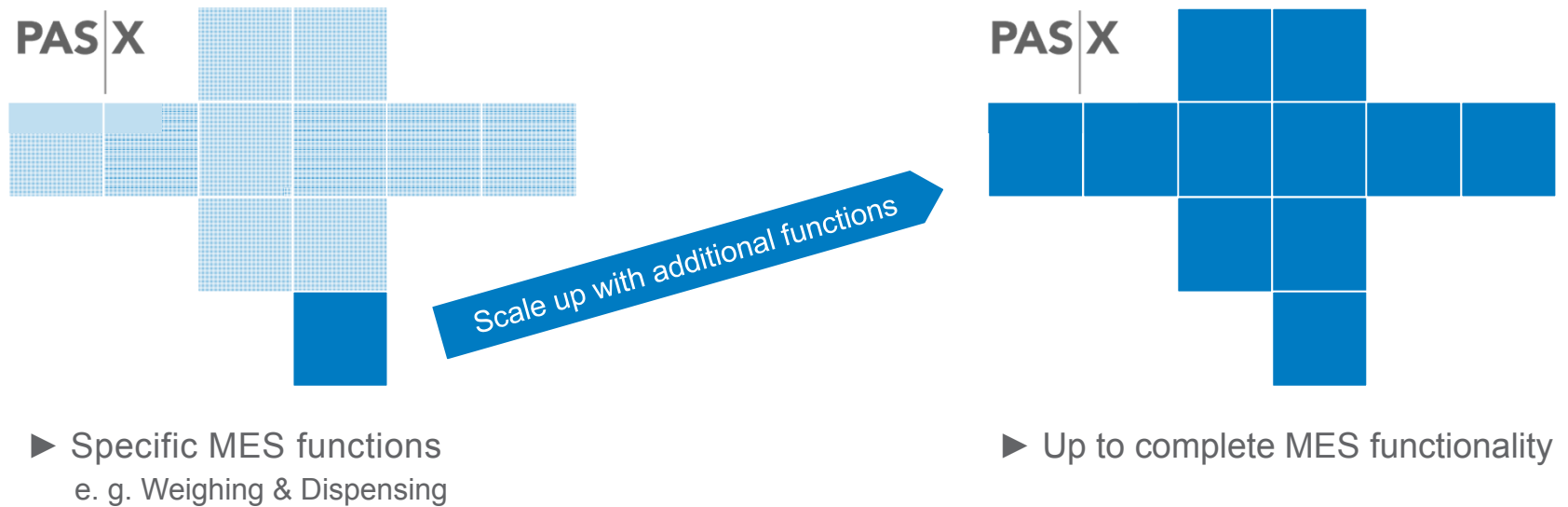
SOFTWARE

- Intuitive dialogs
- Easy operation with minimum training
- Touchscreen



PAS-X  USABILITY

Start small and scale up later



MES success requires more than software

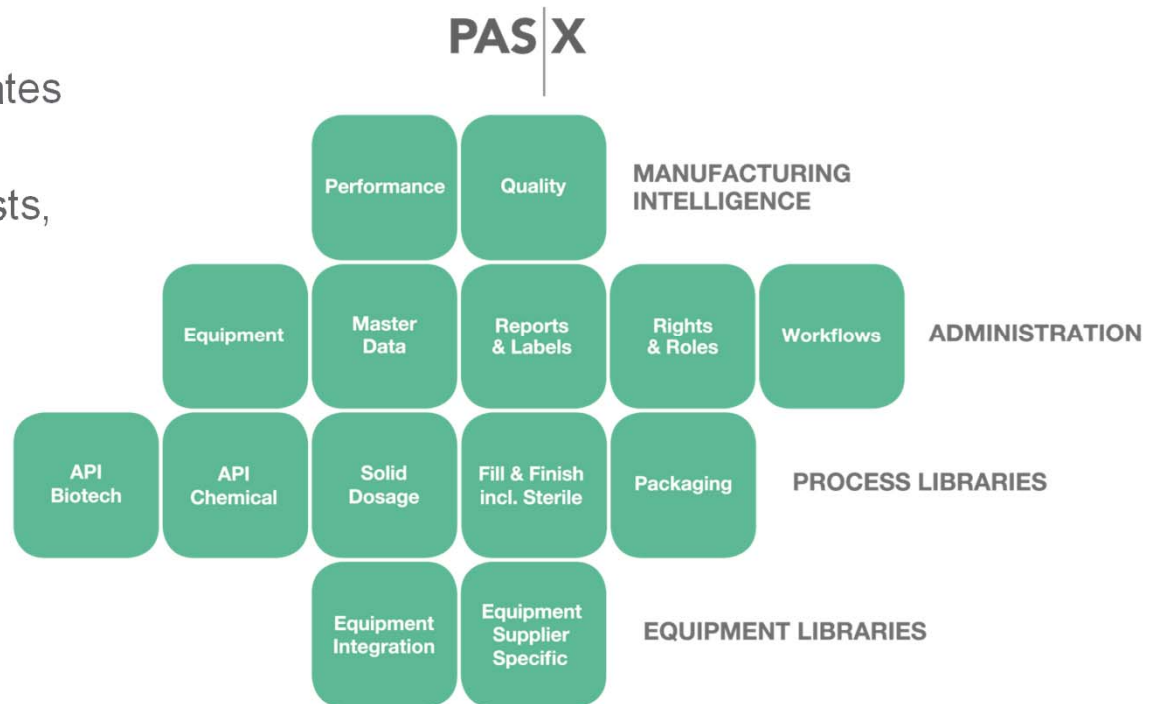
- We offer comprehensive packages for fast and efficient deployment
- Software, Content and Services from a single supplier
- With leading industry knowledge and best practice built in



Best practice content for fast MES deployments

Contents

- Libraries with industry templates for your business
- Ready to use descriptions, lists, process maps and controls
- Virtual manufacturing site concept

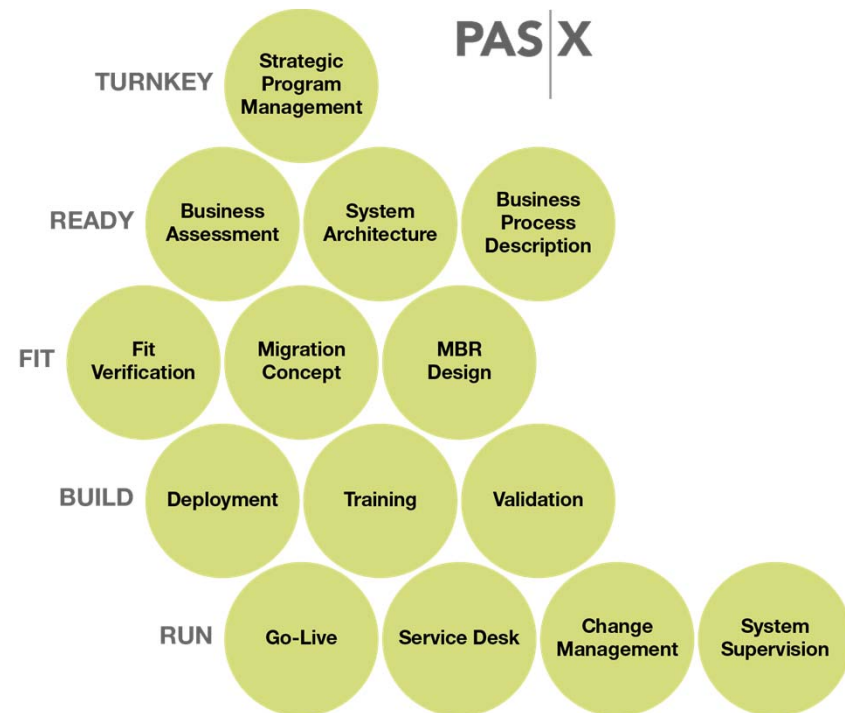


Professional Services

Services

Support during all implementation phases

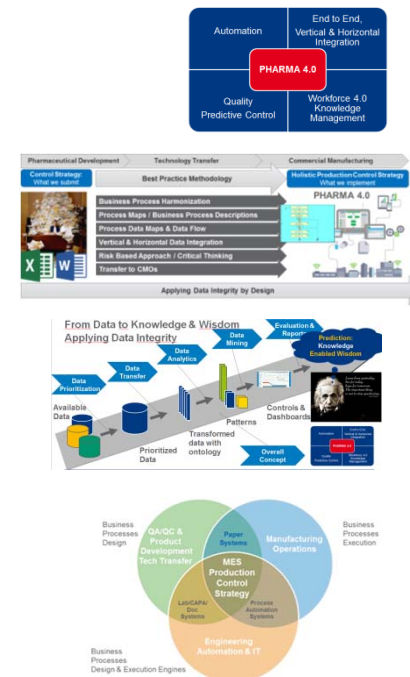
- Portfolio is based on industry best-practice and requirements of PAS-X user community
- Consultants & trainers highly specialized in pharmaceutical and bio-manufacturing
- Short response and solution times



Summary & Conclusions

PHARMA 4.0 is not only Automation – Its an End to End Holistic Manufacturing Control Strategy

- Business process based Best Practice Methodology to transform the Development based Control Strategy to the Holistic Manufacturing Control Strategy
- Data Integrity by Design & Data turned into Knowledge & Wisdom
- Interdisciplinary Collaboration



Thank you for your attention.

