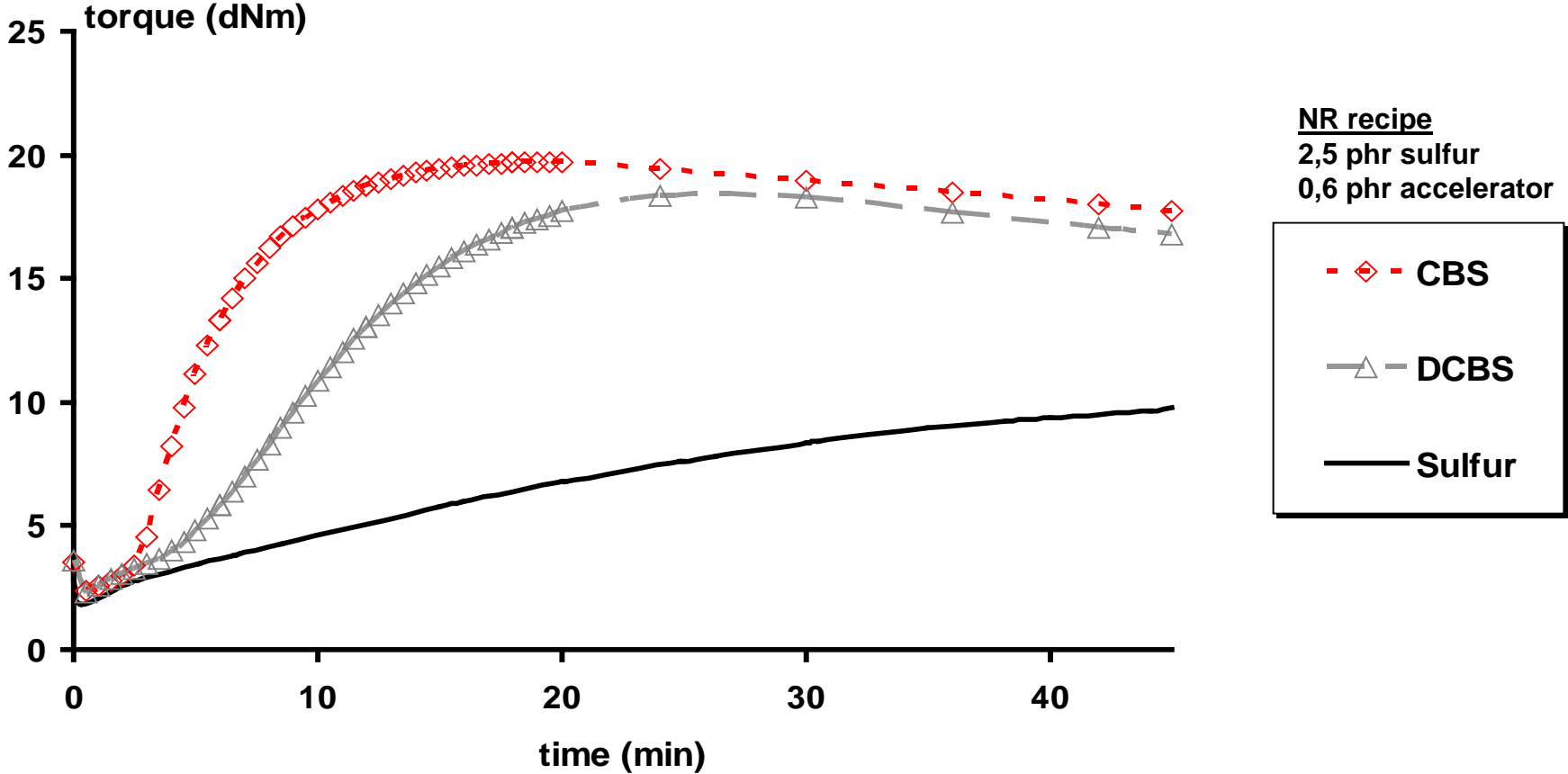


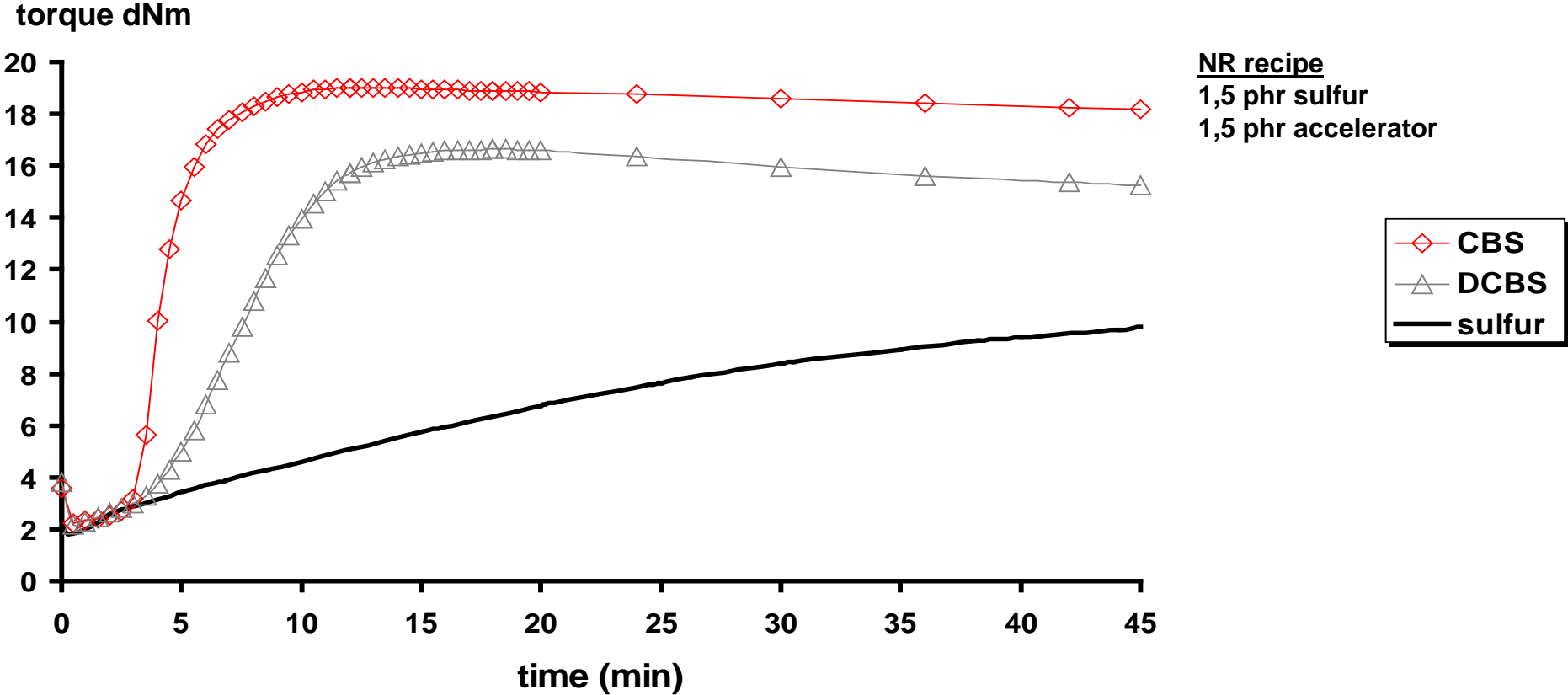
Sulfenamides

Rheometer Curves (NR) at 150 °C / conv. cure

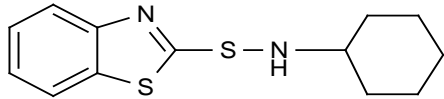


Sulfenamide

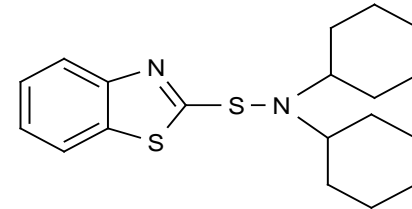
Rheometer Curves (NR) at 150 °C / semi e.v. cure



Development of XLD and XLS with CBS and DCBS

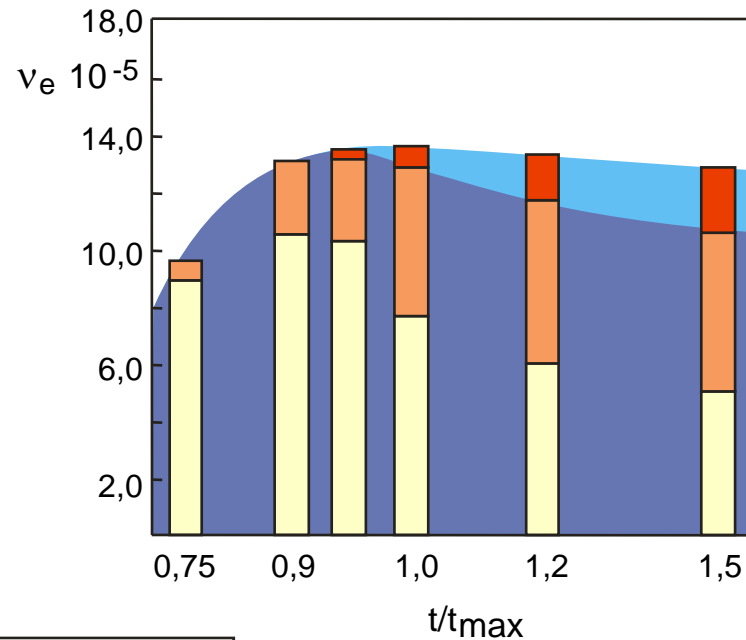
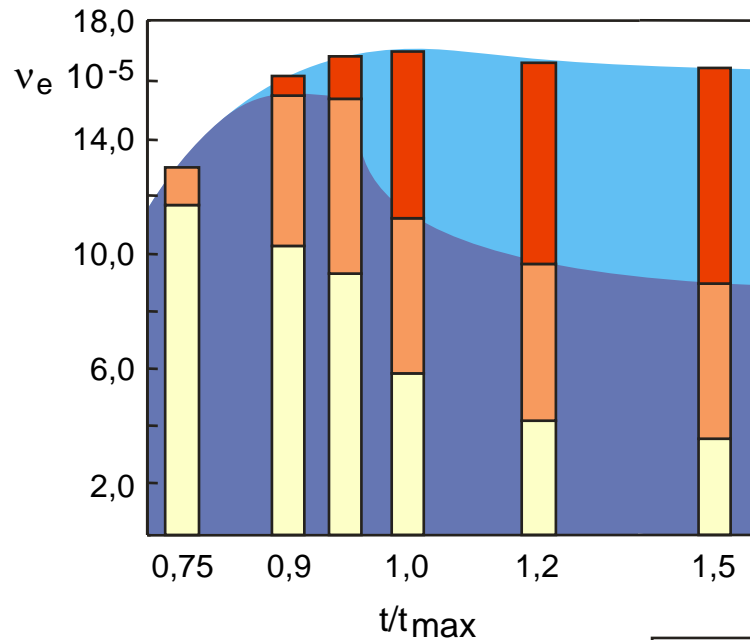


NR
S 1,7phr
150°



CBS

DCBS

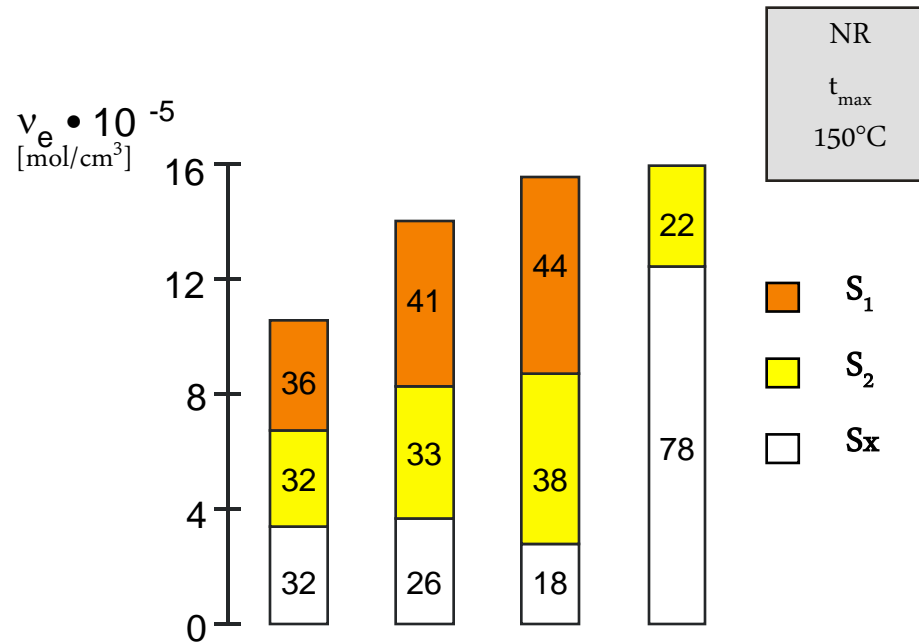


t_{max} [min] = 17,2

t_{max} [min] = 25,4



Influence of accelerator / sulfur ratio



System	①	②	③	④
CBS/S	0.18	0.18	0.18	0.024
S • 10 ⁻⁴ [mol/cm ³]	2.83	4.00	4.83	12