

# PUSHER VALVE

## 5/2 Cartridge Poppet Valve - Solenoid Pilot Operated - Internal Pilot Supply

- High-speed poppet construction
- Constant repeatability
- Non-friction seat seals
- Non-lube
- Solenoid, remote pilot options
- Dual pressure options
- Locking, non-locking manual overrides
- Special versions available



**Model Number: D2176D2903**

(can be used for replacement of W7476A2910)

### DESIGN

**Poppet Valve:** Viton-seals on metal seat.

**Body:** Aluminum alloy.

**Size:** ND 9, for existing ANSI-sub-base (Cv = 1), e.g. W500B91. ISO interface also available.

### STANDARD SPECIFICATIONS

**Solenoids:** Rated for continuous duty; AC or DC power.

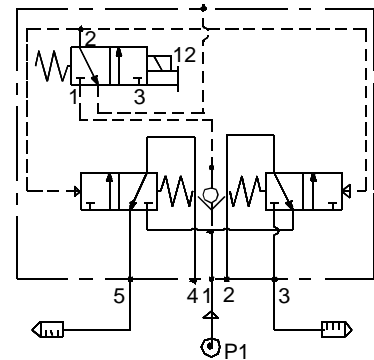
**Power Consumption:** 10.9 VA max. inrush, 8.5 VA max. holding on 50 or 60 Hz; 6.5 watts nominal on DC.

**Flow Medium:** Compressed air, filtered.

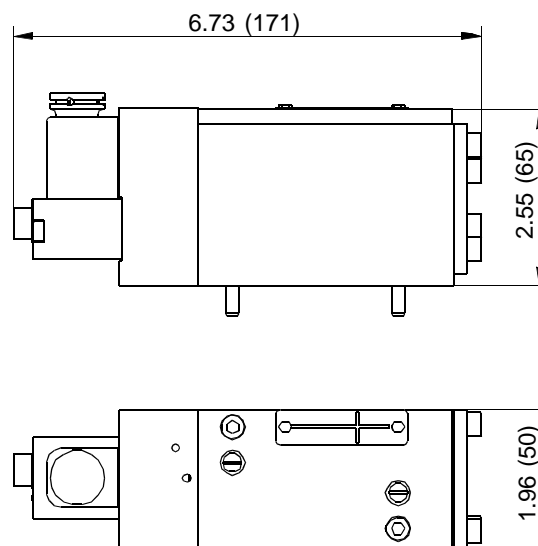
**Ambient Temperature:** 0° to 175° F (-17° to 80° C).

**Media Temperature:** 0° to 300° F (-17° to 150° C).

**Inlet Pressure:** 15 to 90 psig (1 to 6 bar).



### Dimensions - inches (mm)



We reserve the right to introduce technical modifications.