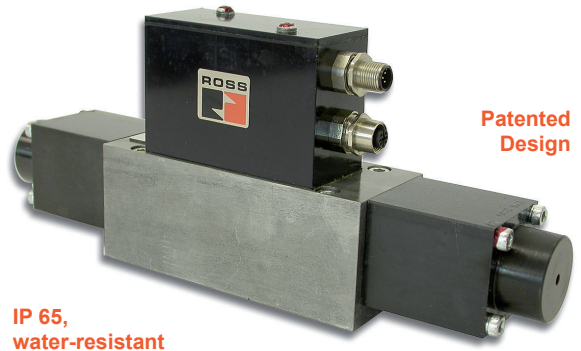


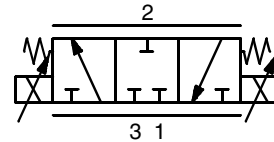
PROPORTIONAL VALVE

Plunger Control, Counterblow, Final Blow

- Proportional pressurizing and exhausting
- Poppet construction
- "Plug-and-play" concept
- Excellent hysteresis
- Long service life
- Various interfaces available
- Digital control
- Self-adjusting zero-point
- Customer-specific electrical supply



Model Number: 01-SOP-03-00-0-0
(For other models, contact ROSS)



DESIGN FEATURES

Poppet valve with force-balanced valve elements, one valve element being used for pressurizing the downstream system.

Housing: Aluminum alloy

Actuator: Proportional solenoid.

TECHNICAL SPECIFICATIONS

Flow medium: Compressed air or other neutral gases

Ambient temperature: 0° to 70° C

Inlet pressure: 5.5 bar max.*

Operating pressure: 0 to 3.5 bar max.*

* For other pressures, contact ROSS.

We reserve the right to introduce technical modifications without notice.

Dimensions - mm

