

# MOLD OPEN / CLOSE VALVE

3/2 Directional Control Valve - Pressure Operated with Pressure Booster

- High-speed poppet construction
- Constant repeatability
- Non-friction seat seals
- Non-lube
- Specialized low-wear body-coating
- Blowhead compatible
- Separate kick-off available
- Built-in flow controls and inlet shut-off
- Built-in pressure boosters
- Special base and two signal options



Model Number: D3900B0700

## DESIGN

**Poppet Valve:** Viton-seals on metal seats.

**Body:** Aluminum alloy, anodized.

## STANDARD SPECIFICATIONS

**Flow Medium:** Compressed air, filtered.

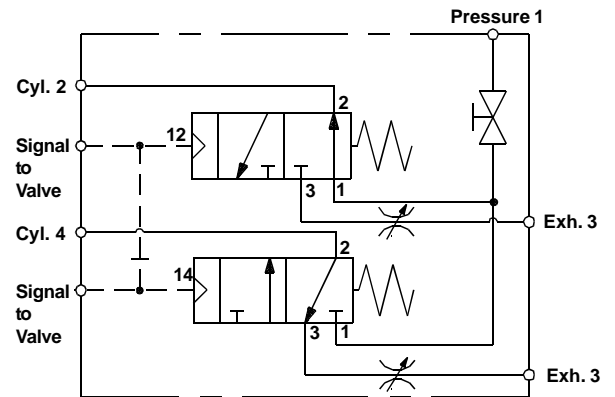
**Ambient Temperature:** 0° to 300° F (-17° to 150° C)

**Media Temperature:** 0° to 300° F (-17° to 150° C)

Kick-off Valve

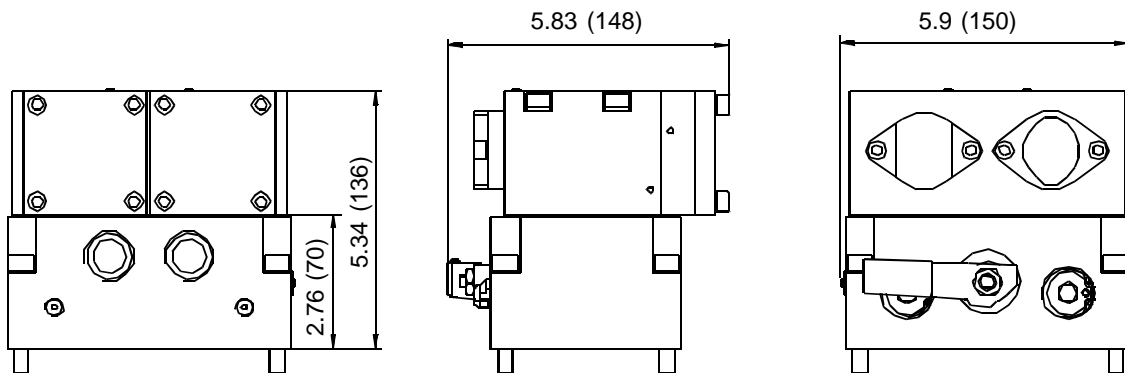


Model Number: D1223A1900



## Dimensions - inches (mm)

We reserve the right to introduce technical modifications.



# MOLD OPEN / CLOSE VALVE

3/2 Directional Control Valve - Pressure Operated with Pressure Booster

