

COUNTERBLOW VACUUM or Hi-Lo PRESSURE

3/2 Directional Control Valve - High-Speed Poppet Design

- High-speed poppet construction
- Constant repeatability
- Non friction seat seals
- Non-lube
- Specialized low-wear body-coating
- Pressure booster option
- Solenoid, remote pilot options
- Locking, non-locking manual overrides
- Base options

A
ROSS/FLEX®
Solution



Model Number: 2175C5912

STANDARD SPECIFICATIONS

Solenoids: Standard voltages 200-240 volts 50/60 Hz; 100-120 volts 50/60 Hz; 110 volts d.c. 24 volts d.c.

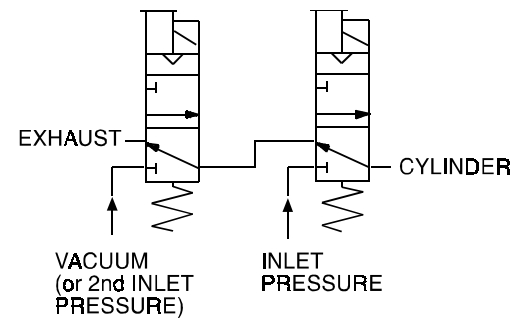
Power Consumption: 10.8 VA inrush, 8.5 VA holding on 50 or 60 Hz; 6 watts on d.c.

Flow Medium: Filtered air.

Ambient Temperature: 0° to 175° F (-17° to 80° C).

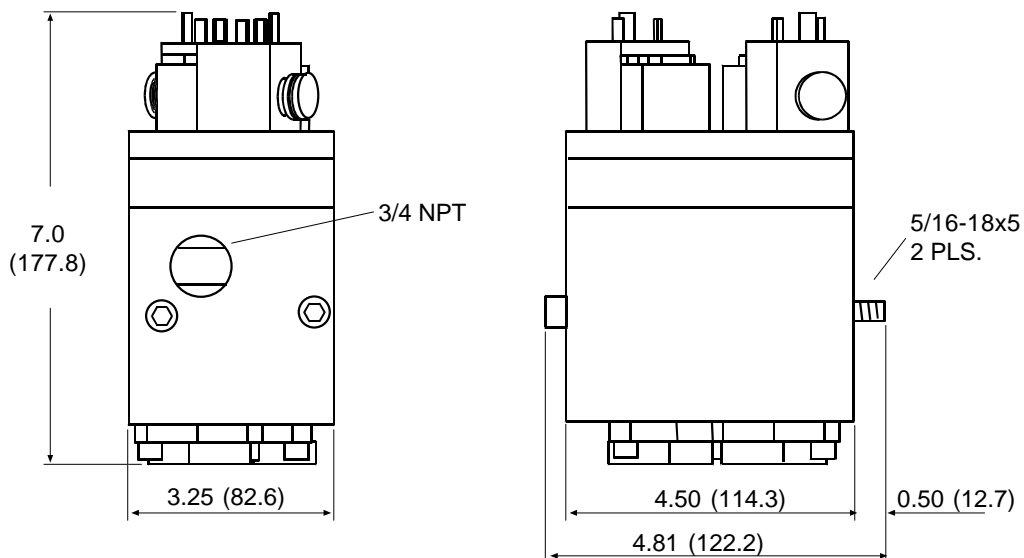
Media Temperature: 0° to 300° F (-17° to 150° C).

Inlet Pressure: 30 to 150 psig (2 to 10 bar).



We reserve the right to introduce technical modifications.

Dimensions - inches (mm)



COUNTERBLOW VACUUM or Hi-Lo PRESSURE

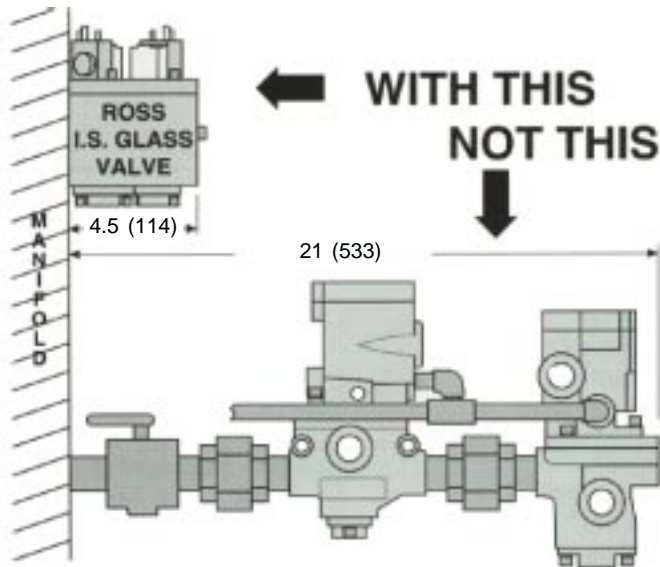
3/2 Directional Control Valve - High-Speed Poppet Design

REDUCE:

- Piping
- Number of Fittings
- Maintenance
- Downtime
- Labor Cost
- Volume to be Evacuated
- Compressed Air Usage

INCREASE:

- Reaction Speed
- Repeatability
- Flexibility: Ports located to suit user's piping
- Output
- PROFITS



INSTALLATION COMPARISON (For Three-Gob System)

	ROSS	Present Std.
Space Needed	385 in ³	5250 in ³
Time to Change-Out	< 1 min.	> 1 hour
Response Speed	RAPID	SLOW
Nipples	0	15
Petcocks	0	3
Unions	0	12
Tees	0	6
Elbows	0	8
Hard-wired junction boxes	0	6
Length of tubing	0	about 16 ft.
Threads to be made	12	75