

BLOW PISTOL

2/2 Directional Control Valve - Normally Closed - Manually Operated

- Poppet construction
- High flow, low pressure
- Integrated handle
- Safety approvals



DESIGN

Poppet Valve: Resilient seal on metal seat.

Housing Material: Aluminum alloy.

Push Button: Aluminum.

STANDARD SPECIFICATIONS

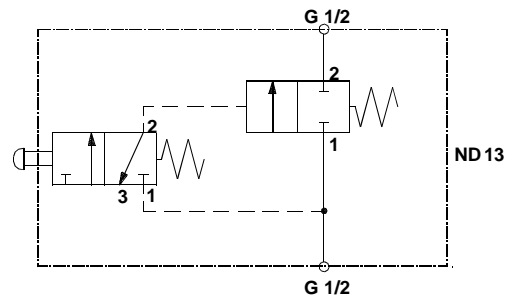
Flow Medium: Compressed air, filtered.

Ambient Temperature: 40° to 175° F (4° to 80° C).

Media Temperature: 40° to 175° F (4° to 80° C).

Inlet Pressure: 5 to 150 psig (0.3 to 10 bar)

Model Number: D1221B4900



We reserve the right to introduce technical modifications.

Dimensions - inches (mm)

