

# BLOW MOLD VACUUM VALVE

3/2 Directional Control Valve - Normally Closed - Pressure Operated

- High-speed poppet construction
- Constant repeatability
- Specialized low-wear body-coating
- Hard piston coating
- Non-lube
- Built-in steel filter
- EMHART interface
- Integrated handle
- Special versions available



Model Number: D2154A6907

## DESIGN

**Poppet Valve:** Viton-seals on metal seat.

**Body:** Aluminum alloy, anodized.

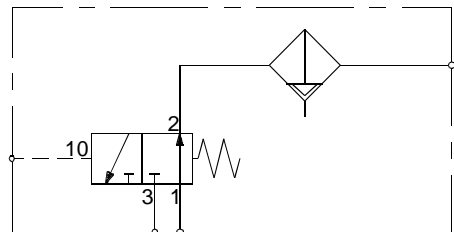
**Piston:** Hard coated, original OEM steel filter.

## STANDARD SPECIFICATIONS

**Flow Medium:** Vacuum service.

**Ambient Temperature:** 0° to 300° F (-17° to 150° C).

**Media Temperature:** 0° to 300° F (-17° to 150° C).



We reserve the right to introduce technical modifications.

## Dimensions - inches (mm)

