

# Mechanical Devices

Size **12**

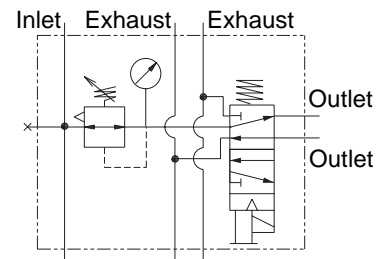
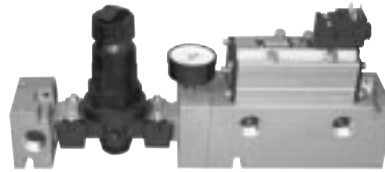
(Automation) **Type A**

Inlet Port **3/4**

- Common exhaust ports.
- Valves are built to the ISO 5599/I mounting standard. (SAE valves also available – Consult ROSS.)
- Outlet ports are 1/2”.
- Each unit supplied with electrical cord and cord grip.
- Modules (of like sizes) can be stacked to fit application – assembly hardware included.

## PMD-HR(1S52N)-N12-A-1E

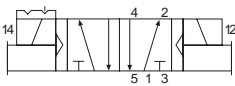
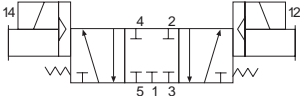
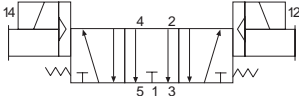
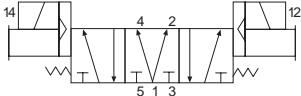
Header with regulator and single solenoid 5/2 valve. Includes 2-meter cord with light and cord grip. See below for other valve options.



Dimensions inches (mm)		
Height	Width	Length
3.6 (92)	11.5 (293)	8.4 (214)

Weight lb (kg)  
17.0 (7.8)

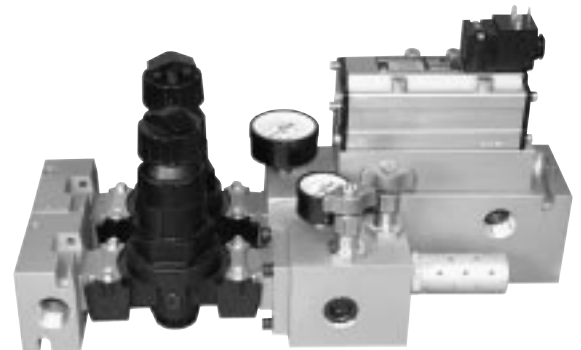
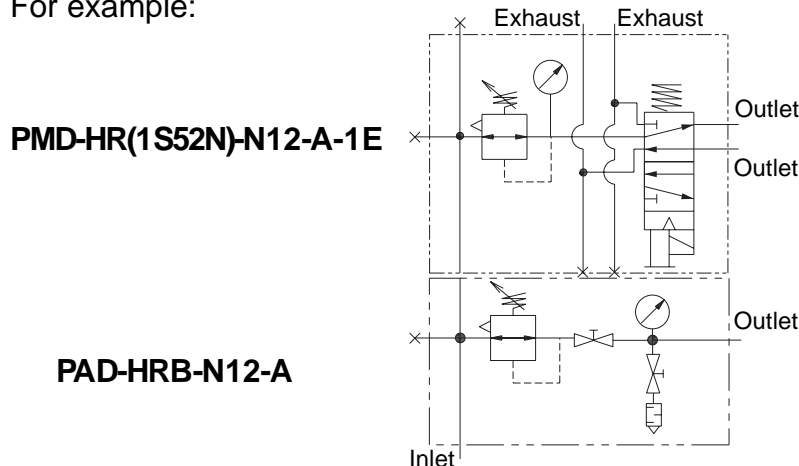
## Valve Options

PMD-HR(2S52N)-N12-A-1E	PMD-HR(2S53B)-N12-A-1E	PMD-HR(2S53E)-N12-A-1E	PMD-HR(2S53P)-N12-A-1E
With double solenoid, 5/2 valve.	With 5/3 closed center valve.	With 5/3 open center valve.	With 5/3 power center valve.
			

## Accessory Kit (PMD-KITA):

Kit includes electrical junction box (608F94 – see page 16) with twenty terminals and four silencers.

These manifold assemblies may also incorporate circuits from the PAD-size 12 products on pages 4 and 5. For example:



# Mechanical Devices

Size **12**

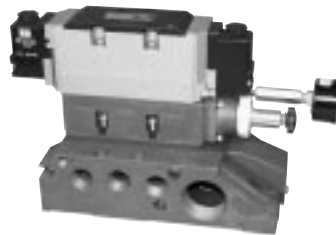
(Automation) **Type B**

Inlet Port **3/4**

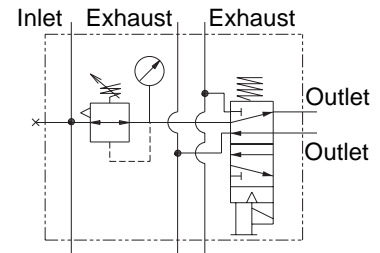
- Valves are built to the ISO 5599/II mounting standard. (ISO 5599/I and SAE valves also available – Consult ROSS.)
- Outlet ports are 1/2”.
- Common exhaust ports.
- Modules (of like sizes) can be stacked to fit application – assembly hardware included.
- Each unit supplied with 2-meter electrical cord and cord grip.

## PMD-MR(1S52N)-N12-A-2E

Manifold station with interposed regulator and single solenoid 5/2 valve. See below for other valve options.



Double solenoid option shown.



Dimensions inches (mm)

Height	Width	Length
3.6 (92)	11.5 (293)	8.4 (214)

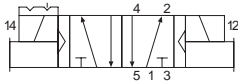
Weight lb (kg)

8.0 (3.7)

### Valve Options

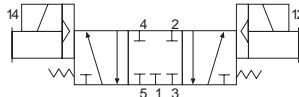
#### PMD-MR(2S52N)-N12-A-2E

With double solenoid, 5/2 valve and regulator.



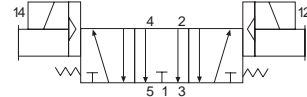
#### PMD-MR(2S53B)-N12-A-2E

With 5/3 closed center valve and regulator.



#### PMD-MR(2S53E)-N12-A-2E

With 5/3 open center valve and regulator.



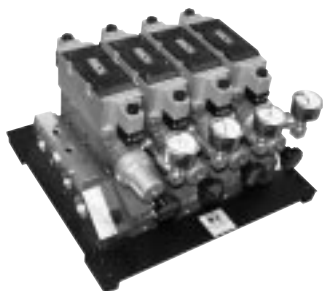
### Accessory Kit (PMD-KITB)

Kit includes electrical electrical junction box (608F94 – see page 16) with twenty terminals, two silencers and end-stations.

### Accessory Kit (PMD-KITC)

Kit includes manifolded inlet L-O-X® valve, electrical junction box (608F94 – see page 16) with twenty terminals, three silencers, and end-stations.

## When ordering PMD units (pgs 9 & 10), specify:



Port Thread Type: \_\_\_\_\_

N = NPT

B = BSPP

S = SAE<sup>1</sup>

PMD-MR(1S52N)-N12-A-2E

Voltage (for units with solenoid valves): \_\_\_\_\_

E = 100-110 volts 50 Hz; 100-120 volts 60 Hz; 48 volts d.c.

W = 24 volts d.c.; 48 volts 60 Hz

<sup>1</sup> Consult ROSS for availability.