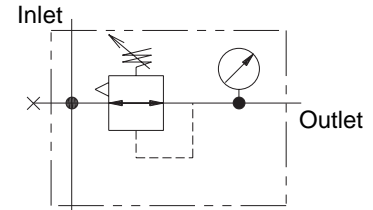
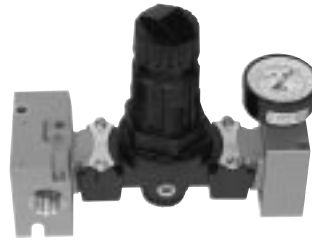


- Supply headers equipped with an auxiliary outlet 3/4" port.
- Independent exhaust ports on circuit branches.
- All inlet and outlet ports are 3/4" size.
- Additional 1/4" port on outlet.
- Modules (of like size) can be stacked to fit application – assembly hardware included.

PAD-HR-N12-A

Supply header with regulator.



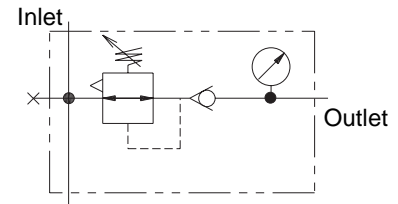
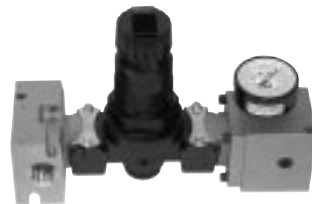
Weight lb (kg)
4.0 (1.9)

Dimensions inches (mm)

Height	Width	Length
7.3 (184)	8.7 (221)	3.2 (82)

PAD-HRC-N12-A

Supply header with regulator and check.



Weight lb (kg)
5.0 (2.3)

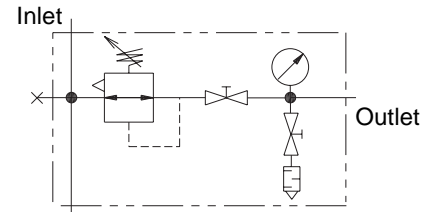
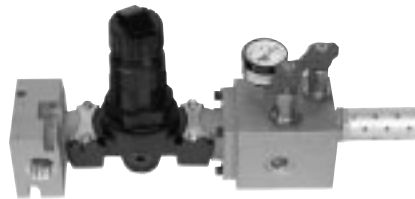
Dimensions inches (mm)

Height	Width	Length
7.3 (184)	10.1 (257)	3.2 (82)

NOTE: This circuit requires a downstream pressure release.

PAD-HRB-N12-A

Supply header with regulator, and shutoff with blow down.



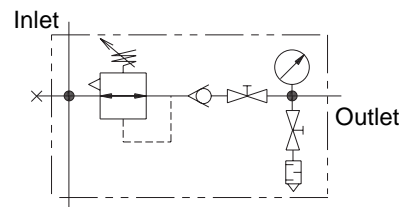
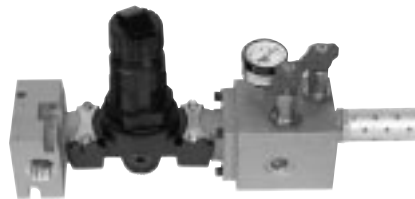
Weight lb (kg)
8.0 (3.7)

Dimensions inches (mm)

Height	Width	Length
7.3 (184)	14.6 (370)	3.2 (82)

PAD-HRCB-N12-A

Supply header with regulator, check, and shutoff with blow down.



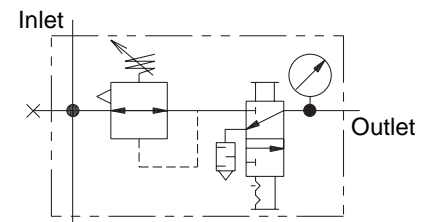
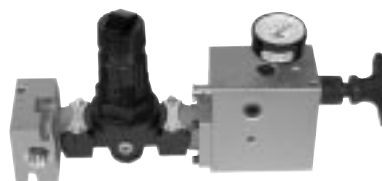
Weight lb (kg)
8.0 (3.7)

Dimensions inches (mm)

Height	Width	Length
7.3 (184)	14.6 (370)	3.2 (82)

PAD-HRX-N12-A

Supply header with regulator and L-O-X® valve.



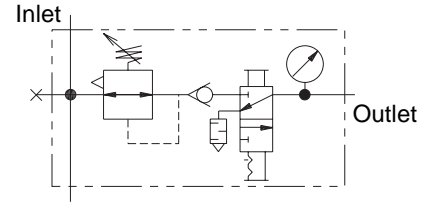
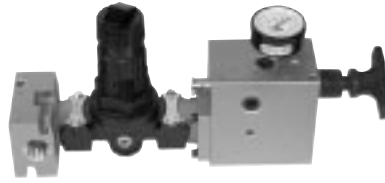
Weight lb (kg)
10.0 (4.6)

Dimensions inches (mm)

Height	Width	Length
7.3 (184)	15.3 (387)	3.2 (82)

PAD-HRCX-N12-A

Supply header with regulator, check, and L-O-X® valve.



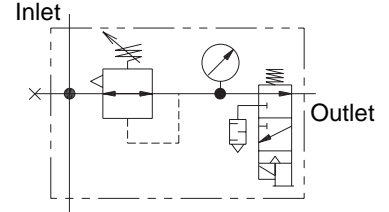
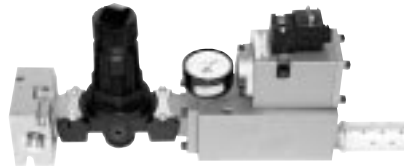
Dimensions inches (mm)

Height	Width	Length
7.3 (184)	15.3 (387)	3.2 (82)

Weight lb (kg)
10.0 (4.6)

PAD-HR(1S32O)-N12-A-E

Supply header with regulator and 3/2 normally open solenoid valve. Includes 2-meter cord with light and cord grip.



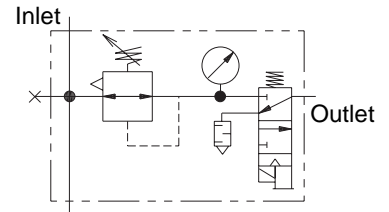
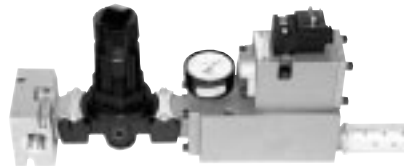
Dimensions inches (mm)

Height	Width	Length
7.3 (184)	16.6 (422)	3.2 (82)

Weight lb (kg)
10.0 (4.6)

PAD-HR(1S32C)-N12-A-E

Supply header with regulator and 3/2 normally closed solenoid valve. Includes 2-meter cord with light and cord grip.



Dimensions inches (mm)

Height	Width	Length
7.3 (184)	16.6 (422)	3.2 (82)

Weight lb (kg)
10.0 (4.6)

When ordering PAD units (pgs 4-8), specify:

Size **12**

Port Thread Type: _____
N = NPT
B = BSPP
S = SAE¹

Voltage (for units with solenoid valves): _____
E = 100-110 volts 50 Hz; 100-120 volts 60 Hz; 48 volts d.c.
W = 24 volts d.c.; 48 volts 60 Hz

PAD-HRCX-N12-A-E

Size **20**

Port Thread Type: _____
N = NPT
B = BSPP
S = SAE¹

L-O-X Equipped Auxilliary Port: _____
 Add X to model number (Size 20 only).

Voltage (for units with solenoid valves): _____
E = 100-110 volts 50 Hz; 100-120 volts 60 Hz; 48 volts d.c.
W = 24 volts d.c.; 48 volts 60 Hz

PAD-XHXRC-N20-A-E

¹ Consult ROSS for availability.

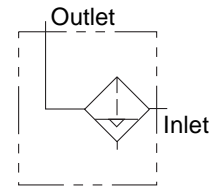


(Inlet Air Prep Units)

- Prepares inlet air supply for entire stack.
- Attaches to the bottom of a size 12 stack – assembly hardware included.
- Modular connections for ease of service.
- All inlet and outlet ports are 3/4” size.

PAD-FH-N12-A

Inlet with filter and supply header.



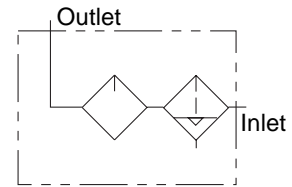
Weight lb (kg)
4.0 (1.9)

Dimensions inches (mm)

Height	Width	Length
3.6 (92)	11.5 (293)	8.4 (214)

PAD-FLH-N12-A

Inlet with filter, lubricator, and supply header.



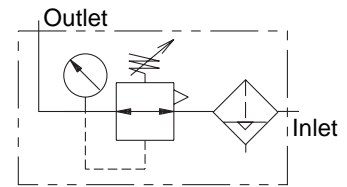
Weight lb (kg)
7.0 (3.2)

Dimensions inches (mm)

Height	Width	Length
5.2 (133)	15.2 (387)	8.4 (214)

PAD-FRH-N12-A

Inlet with filter, regulator, and supply header.



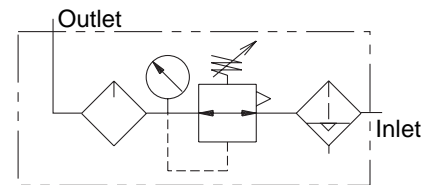
Weight lb (kg)
7.0 (3.2)

Dimensions inches (mm)

Height	Width	Length
5.2 (133)	11.5 (293)	8.4 (214)

PAD-FRLH-N12-A

Inlet with filter, regulator, lubricator, and supply header.



Weight lb (kg)
10.0 (4.6)

Dimensions inches (mm)

Height	Width	Length
3.6 (92)	7.8 (199)	8.4 (214)

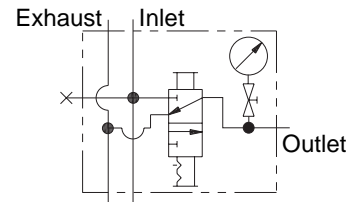
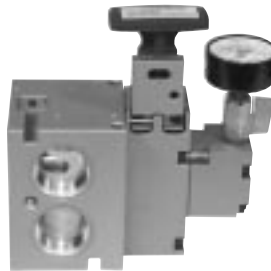
- All inlet and exhaust ports are 1 1/4" size. Outlets are 1" size.
- Additional 1/4" port on outlet.
- Supply headers equipped with an auxiliary 1" outlet port.
- Common exhaust port on circuit branches and headers.
- Modules (of like sizes) can be stacked to fit application – assembly hardware included.

PAD-HX-N20-A

Supply header with L-O-X®.

Dimensions inches (mm)

Height	Width	Length
8.7 (219)	7.8 (198)	3.4 (86)



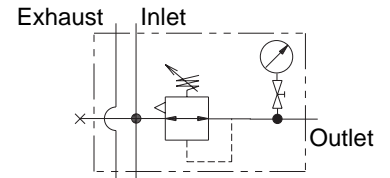
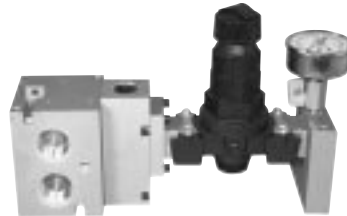
Weight lb (kg)
6.0 (2.8)

PAD-HR-N20-A

Supply header with regulator.

Dimensions inches (mm)

Height	Width	Length
8.7 (219)	13.1 (332)	3.4 (86)



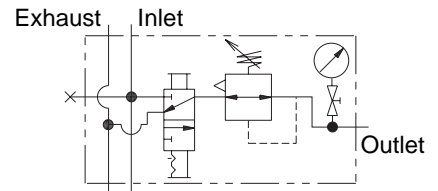
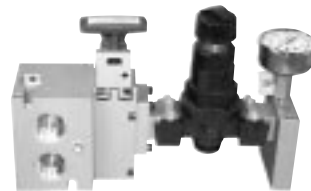
Weight lb (kg)
10.0 (4.6)

PAD-HXR-N20-A

Supply header with L-O-X® and regulator.

Dimensions inches (mm)

Height	Width	Length
8.7 (219)	13.1 (332)	3.4 (86)



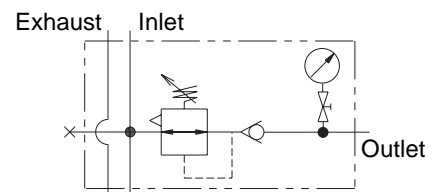
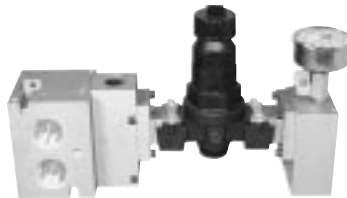
Weight lb (kg)
10.0 (4.6)

PAD-HRC-N20-A

Supply header with regulator and check.

Dimensions inches (mm)

Height	Width	Length
8.7 (219)	14.4 (365)	3.4 (86)



NOTE: This circuit requires a downstream pressure release.

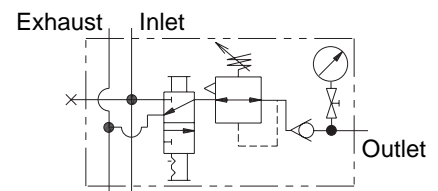
Weight lb (kg)
11.0 (5.0)

PAD-HXRC-N20-A

Supply header with L-O-X®, regulator, and check.

Dimensions inches (mm)

Height	Width	Length
8.7 (219)	14.4 (365)	3.4 (86)



NOTE: This circuit requires a downstream pressure release.

Weight lb (kg)
13.0 (5.9)

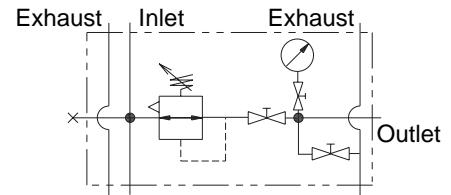
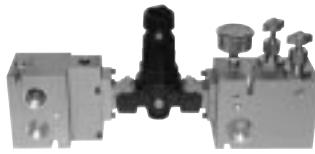
Air Distribution

Size **20**

Inlet Port **1 1/4**

PAD-HRB-N20-A

Supply header with regulator, and shutoff with blow down.

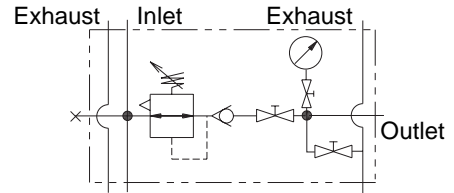
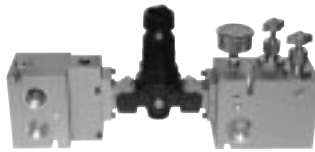


Dimensions inches (mm)		
Height	Width	Length
8.7 (219)	17.9 (454)	3.4 (86)

Weight lb (kg)
31.0 (14.1)

PAD-HRCB-N20-A

Supply header with regulator, check, and shutoff with blow down.

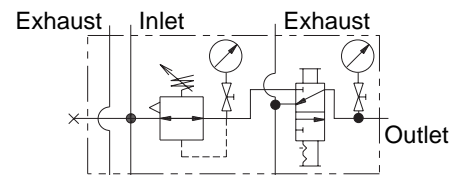


Dimensions inches (mm)		
Height	Width	Length
8.7 (219)	17.9 (454)	3.4 (86)

Weight lb (kg)
31.0 (14.1)

PAD-HRX-N20-A

Supply header with regulator, and L-O-X® valve.

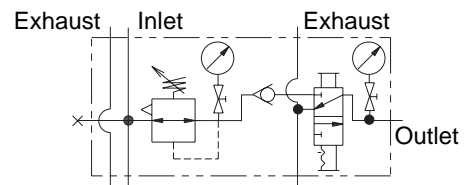


Dimensions inches (mm)		
Height	Width	Length
8.7 (219)	17.9 (454)	3.4 (86)

Weight lb (kg)
13.0 (5.9)

PAD-HRCX-N20-A

Supply header with regulator, check, and L-O-X® valve.

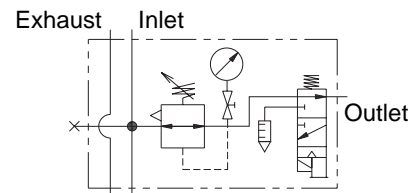
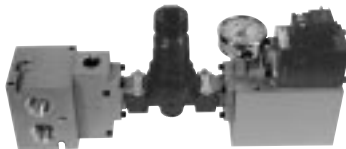


Dimensions inches (mm)		
Height	Width	Length
8.7 (219)	18.8 (477)	3.4 (86)

Weight lb (kg)
13.0 (5.9)

PAD-HR(1S320)-N20-A-E

Supply header with regulator and 3/2 normally open solenoid valve. Includes 2-meter cord with light and cord grip.

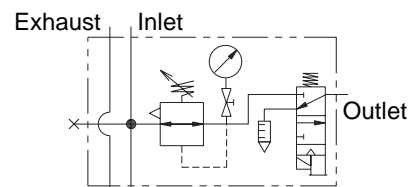


Dimensions inches (mm)		
Height	Width	Length
8.7 (219)	21.0 (534)	3.4 (86)

Weight lb (kg)
18.0 (8.2)

PAD-HR(1S32C)-N20-A-E

Supply header with regulator and 3/2 normally closed solenoid valve. Includes 2-meter cord with light and cord grip.



Dimensions inches (mm)		
Height	Width	Length
8.7 (219)	21.0 (534)	3.4 (86)

Weight lb (kg)
18.0 (8.2)