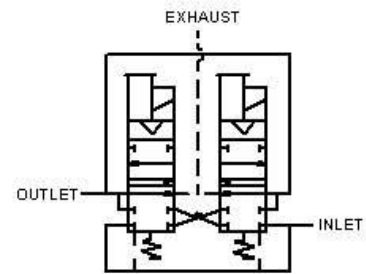
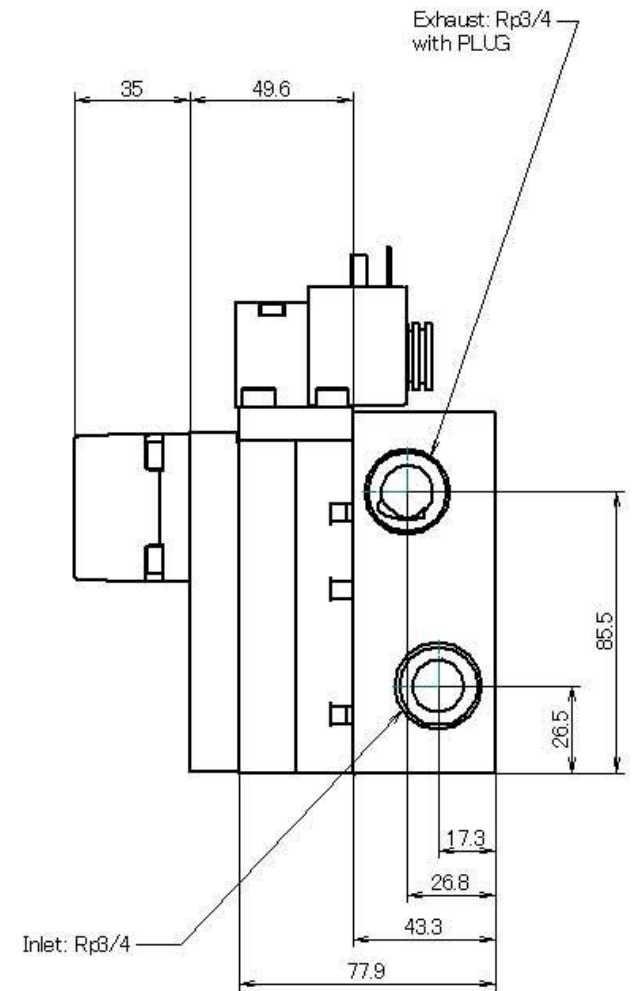
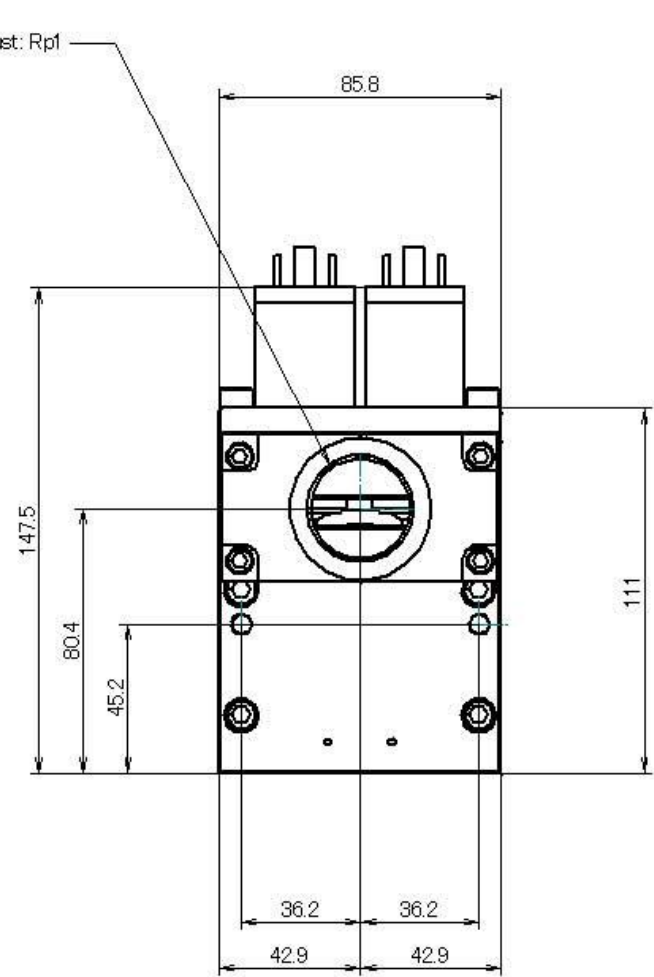
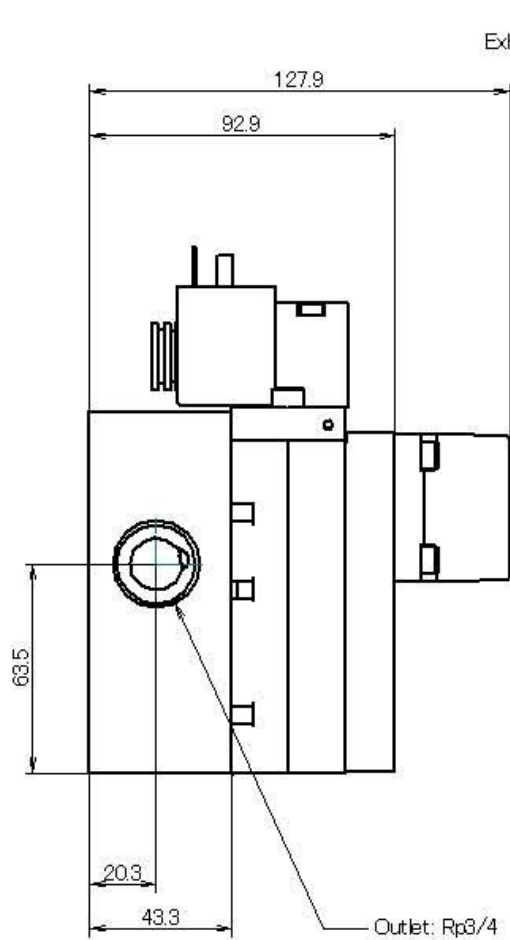


RESTRICTED -ROSS PROPRIETARY RIGHTS INVOLVED.
 This document is controlled by ROSS CONTROL and ROSS Asia K.K., accepted
 contained herein are reserved by ROSS, for the document: all the copied, dupli-
 cated, sold or otherwise to others by you without the express written permission of
 ROSS, and the device embodying said information shall not be manufactured, used,
 sold or displayed to others by you without such permission.
 This document is property of ROSS and shall be returned upon request.

R-H Base-Mount Type



REV.	H.O	OTA	DATE	2004/06/01	THIRD ANGLE	SCALE	ON
ROSS Asia K.K.			CROSSFLOW SZZ WITH 1" EX. 0320A86				
10209-5 Tama, Sagamihara Kanagawa, Japan			DWA No.		13573B4891		REV.

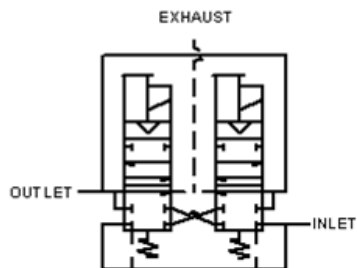
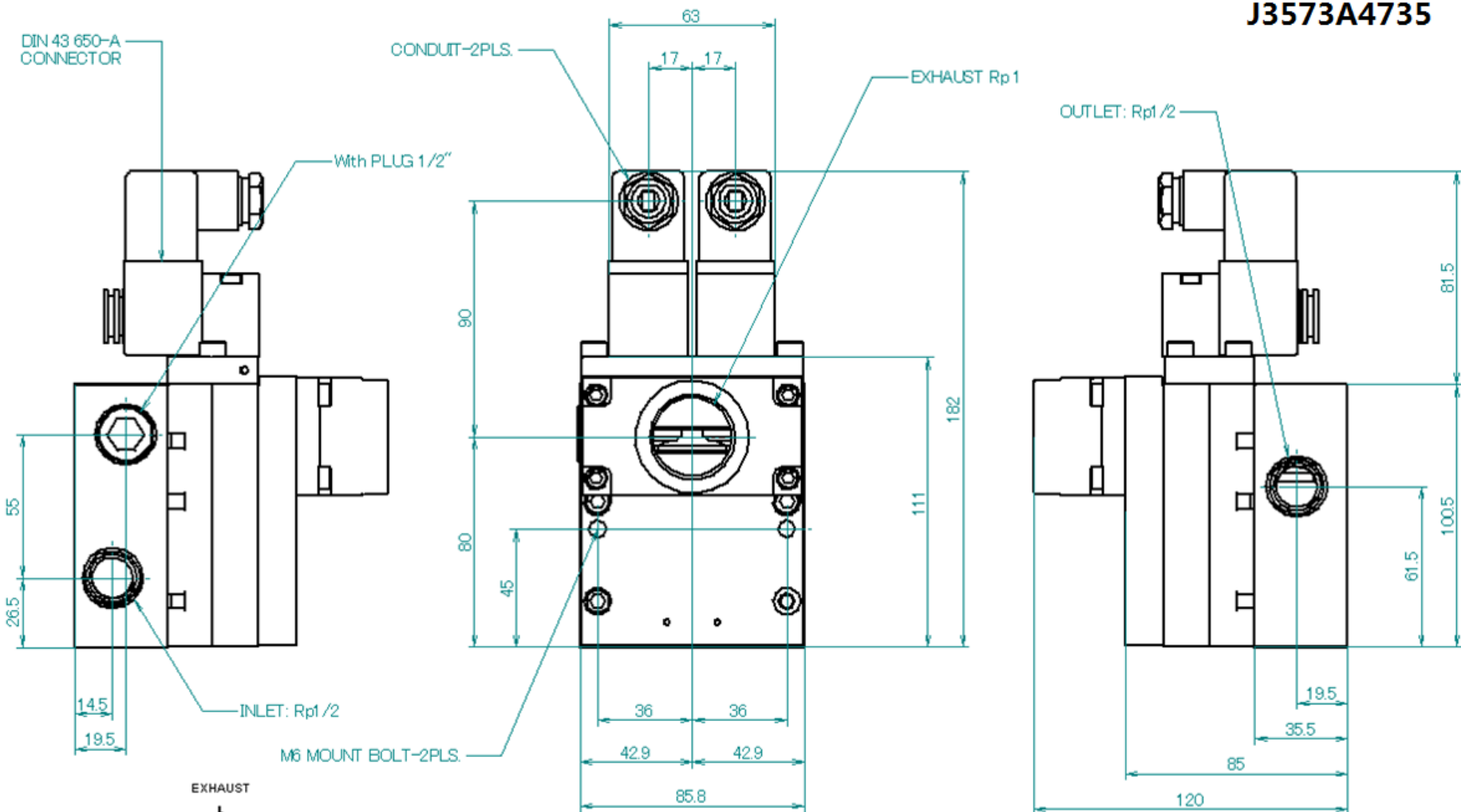


REGISTERED ROSS PROPRIETARY RIGHTS INVOLVED
 This document is transmitted by ROSS CONTROLS and ROSS Asia K.K., accepted and bind herein are reserved by ROSS, for the document will not be copied, duplicated, sold or distributed to a third party without the express written permission of ROSS, and the device embodying said information will not be manufactured, used, sold or distributed to a third party without such permission.
 This document is property of ROSS and shall be returned upon request.



REV	H.O	PER	OTA	DATE	2002/06/19	THIRD ANGLE	SCALE	ON
ROSS Asia K.K.						NOTE	Crossflow SZ2 with 1" Exl. D320A86	
10209-5 Tama, Sagami-hara Kanagawa, Japan						DWG No.	J3573A4883	REV.

J3573A4735

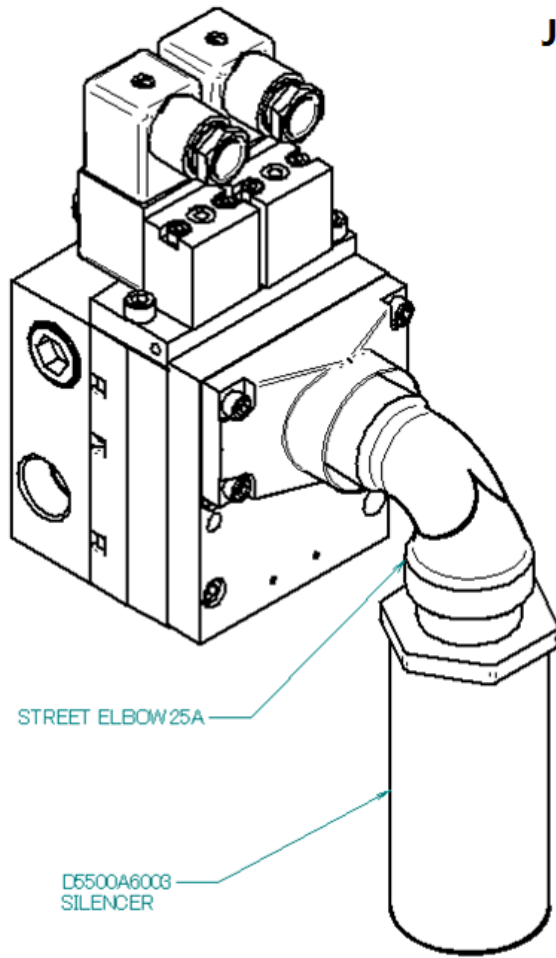


RESTRICTED -ROSS PROPRIETARY RIGHTS INVOLVED
 This document is transmitted by ROSS CONTROLS and ROSS Aids K.K., accepted
 contained therein are reserved by ROSS, that the document shall not be copied, dupli-
 cated, sold or disclosed to others by you without the express written permission of
 ROSS, and the device embodying said information shall not be manufactured, used,
 sold or disclosed to others by you without such permission.
 This document is property of ROSS and shall be returned upon request



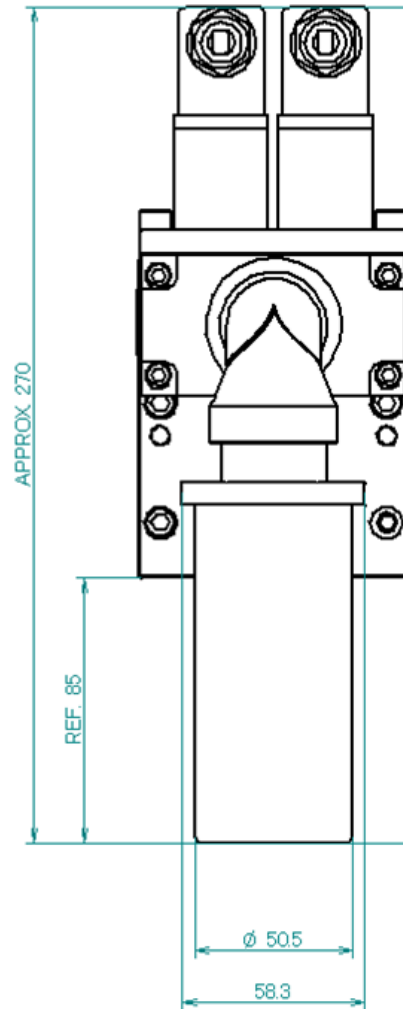
DES	H.O	APR	OTA	DATE	2004/06/01	THIRD	SCALE
						ANGLE	ON
ROSS Asia K.K.						NAME	
10209-5 Tana, Sagamihara						Crossflow SZZ with 1" Exh. D320 A88	
Kanagawa, Japan						DWG No.	
						REV.	

J3573A4735



STREET ELBOW 25A

D5500A6003
SILENCER

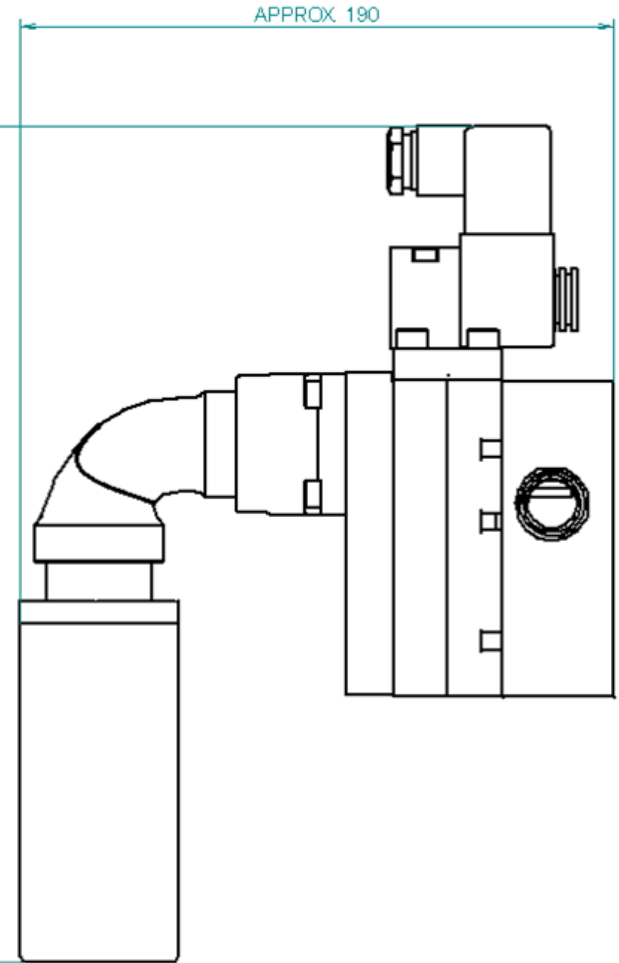


APPROX. 270

REF. 85

∅ 50.5

58.3



APPROX. 190

RESTRICTED - ROSS PROPRIETARY RIGHT IS INVOLVED
This document is owned by ROSS CONTROLS and ROSS Asia K.K. All rights reserved. No part of this document may be copied, duplicated, sold or disclosed to others by you without the express written permission of ROSS, and the device embodying said information shall not be manufactured, used, sold or disclosed to others by you without such permission.
This document is the property of ROSS and shall be returned upon request.



REV.	H.0	APP.	OTA	DATE	2004/06/01	THIRD	ANGLE	SCALE	ON
ROSS Asia K.K.						NAME			
10209-5 Tama, Sagamihara						Crossflow S22 with 1" Exh. D320A86			
Kanagawa, Japan						DWG No.		REV.	

Specification Sheet

■ **SERPAR Crossflow Double Valve Size 2**

Model Number	J3573A4735
Solenoid Coil	Two pcs. on 100% Duty Source: AC100-110V 60/50Hz, 200-220V 60/50Hz DC24V
Consumption	AC; Inrush 8VA, Holding 6VA, DC; 6Watts
Connection	DIN 43 650-A Connector & Receptacle
Pilot Supply	Internal Pilot Supply
Ambient Temp.	4~50°C
Media Temp.	4~80°C
Fluid	Filtered Compressed Air
Pressure Range	2.8~7 bar (0.28~0.7 MPa)
Cv	IN ⇒ OUT: 3.7 (Ref. Effective Area: 70mm ²) OUT⇒ EXH: 9.0 (Ref. Effective Area: 170mm ²)
Manual Override	Non-Lockable Push Button on Pilot Valve
Port Threads	Inlet Rp 1/2, Outlet Rp 1/2, Exhaust Rp 1

■ **Included Parts**

Silencer	D5500A6003 with Street Elbow
Sub-Base	D1633C01
DIN Connector	937K87 Two pcs.

